

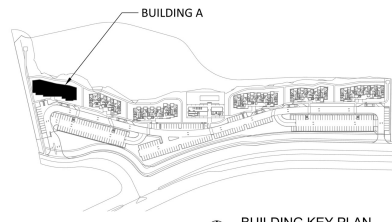
- EF-A 30.0 EA
- EA-4" Dia Exhaust ... 1413.1 FT
- EA-5" Dia Exhaust Duct 37.0 FT
- RF 736.2 FT
- 24"x8", 2HR Rated Sh... 5.0 EA
- 30"x8", 2HR Rated S... 11.0 EA
- U-E 4.0 EA
- U-D 4.0 EA
- U-C 4.0 EA
- U-B 8.0 EA
- U-A 4.0 EA



BUILDING A GROUND FLOOR- MECHANICAL PLAN
SCALE: 1/8" = 1'-0"



BUILDING A TYPICAL FLOOR - MECHANICAL PLAN
SCALE: 1/8" = 1'-0"



BUILDING KEY PLAN
SCALE: NTS

SCHEDULE UNITS IDENTIFICATION		
UNITS NAMES	ARCHITECTURAL IDENT.	SQ.FT.
UNIT A	2-B END UNIT	1,000
UNIT B	3-B CENTER UNIT B	700
UNIT C	3-B CENTER UNIT C	1,000
UNIT D	3-B CENTER UNIT D	730
UNIT E	2-B END UNIT E	1,000

PROJECT ADDRESS:
FONTANA APARTMENTS- BUILDING A
13170 FONTANA LAKE WAY,
FORT MYERS, FL

MEP Design Group
Mechanical | Electrical | Fire Protection
3000 Professional Center Blvd., Suite 100
Fort Myers, FL 33901
www.mepdesigngroup.com
Phone: 813.939.1111

DATE: 10.7.2022
PROJECT: 21012

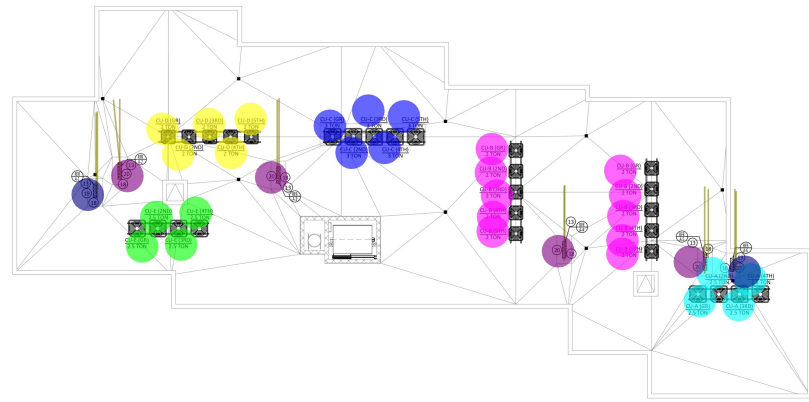
M-200

- CU-E, 2.5T 4.0 EA
- CU-D, 2T 5.0 EA
- CU-C, 3T 5.0 EA
- CU-B, 2T 10.0 EA
- CU-A, 2.5T 4.0 EA
- EA-4" Dia Exhaust D... 183.3 FT
- EF-A 5.0 EA
- RF 282.1 FT
- 24"x8", 2HR Rated Shaft 4.0 EA
- 30"x8", 2HR Rated Shaft 8.0 EA
- U- D 1.0 EA
- U- C 1.0 EA
- U- B 2.0 EA

UNIT	SQ. FT.
A	700
B	1,000
C	710
D	1,000

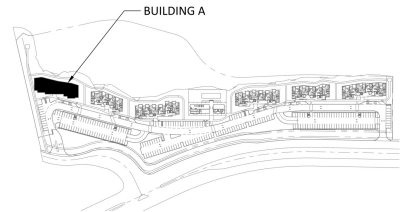


⊕ N BUILDING A 5TH FLOOR- MECHANICAL PLAN
SCALE: 1/8" = 1'-0"



⊕ N BUILDING A ROOF PLAN - MECHANICAL PLAN
SCALE: 1/8" = 1'-0"

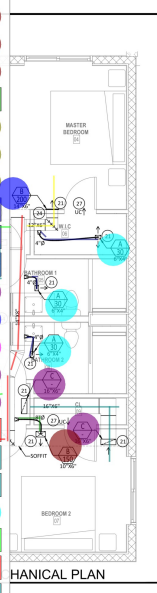
- NOTES:**
1. TRAILER SERVICE AND OTHER EXHAUST DUCTS TO BE CONNECTED TO 12" VENT (MODEL # DMB-84-1).
 2. COORDINATE WITH STRUCTURAL ENGINEER FOR INSTALLATION OF MECHANICAL EQUIPMENT ON THE ROOF.
 3. REFRIGERANT LINE SHALL BE CONNECTED TO ASSOCIATED AIR'S UNIT'S.
 4. ALL CONDENSATE PANS CONNECTED TO 1/2" DIA. W/VALVE DUCT (2" DIA. MINIMUM).
 5. IF SERVICE VENT SLOPE SMOOTHER PIPE TO A/C, NO BACK DRAFT DAMPER CONNECTED TO 12" VENT (MODEL # DMB-84-1).
 6. NO COMBUSTIBLE MATERIAL SHALL BE ALLOWED INSIDE THE MECHANICAL CLOSET.
 7. PROVIDE LOCKER DOOR FOR ALL MECHANICAL CLOSET (TYP).
 8. ALL REFRIGERANT PIPES SHALL BE IN 2HR RATED ENCLOSURE TO ROOF. COORDINATED W/ ARCHITECT AND STRUCTURAL ENGINEER.
 9. PROVIDE 24" X 48" (INSIDE CLEAR) 2 HR RATED SHAFT FOR REFRIGERANT PIPES UP TO ROOF. COORDINATED W/ ARCHITECT AND STRUCTURAL ENGINEER.
 10. PROVIDE 30" X 48" (INSIDE CLEAR) 2 HR RATED SHAFT FOR REFRIGERANT PIPES UP TO ROOF. COORDINATED W/ ARCHITECT AND STRUCTURAL ENGINEER.



⊕ N BUILDING KEY PLAN
NTS

REVISION	
TITLE	MECHANICAL PLAN
PROJECT ADDRESS:	FONTANA APARTMENTS- BUILDING A 13170 FONTANA LAKE WAY, FORT MYERS, FL
MEP Design Group	Mechanical Electrical Fire Protection 10000 Professional Blvd. Suite 111 Fort Lauderdale, FL 33308 Phone: 954.344.1234 www.mepdesigngroup.com
PREPARED BY:	Arif-Draki
CHECKED BY:	Mikha-Magnum
DATE:	As Noted
DATE:	10.7.2022
PROJECT:	Fontana 13170
SHEET:	M-201

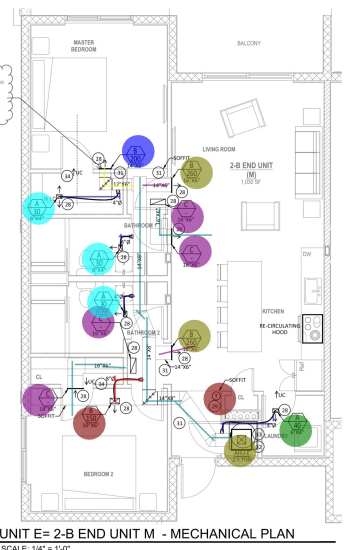
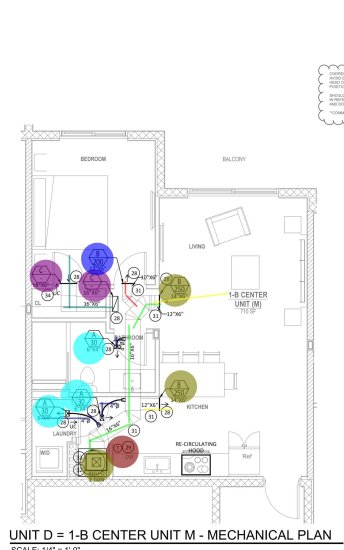
- Mi-Thermostat 1.0 EA
- Mi-Thermostat 1.0 EA
- Mi-Thermostat 1.0 EA
- SA-8" Dia Supply Duct 3.3 FT
- AD-B-220CFM, 12"x6" 1.0 EA
- AD-B-250CFM, 14"x6" 2.0 EA
- AD-B-260CFM, 16"x6" 1.0 EA
- FL-4" Dia Flexible Duct 9.6 FT
- FL-4" Dia Flexible Duct 22.2 FT
- FL-4" Dia Flexible Duct 14.9 FT
- AD-C 2.0 EA
- AD-B-220CFM, 14"x6" 1.0 EA
- AD-B-300CFM, 16"x6" 2.0 EA
- AD-C 4.0 EA
- AD-C 4.0 EA
- SA-10"x6" Supply Duct 8.1 FT
- RA-16"x6" Return Duct 16.3 FT
- RA-16"x6" Return Duct 8.9 FT
- AD-A-30CFM, 6"x4" 5.0 EA
- SA-16"x6" Supply Duct 27.7 FT
- SA-10"x6" Supply Duct 5.7 FT
- RA-16"x6" Return Duct 20.2 FT
- SA-12"x6" Supply Duct 2.7 FT
- AHU-C, 3T 1.0 EA
- SA-16"x6" Supply Duct 18.5 FT
- SA-12"x6" Supply Duct 7.6 FT
- AD-A-30CFM, 6"x4" 3.0 EA
- SA-14"x8" Supply Duct 28.3 FT
- SA-14"x6" Supply Duct 5.6 FT
- SA-12"x6" Supply Duct 6.8 FT
- AHU-B, 2T 1.0 EA
- AD-B-200CFM, 14"x6" 1.0 EA
- AD-B-260CFM, 16"x6" 1.0 EA
- AD-A-30CFM, 6"x4" 3.0 EA
- AD-B-150CFM, 10"x6" 1.0 EA
- AD-A-40CFM, 6"x4" 1.0 EA
- AHU-A, 2.5T 1.0 EA
- AD-B-200CFM, 12"x6" 1.0 EA
- SA-14"x6" Supply Duct 10.1 FT



- DRAWING NOTES:**
- (21) PROVIDE INSULATED PLENUM ABOVE & BEHIND ALL GRILLES FOR DUCT CONNECTION (TYP).
 - (22) PROVIDE PROGRAMMABLE THERMOSTAT.
 - (23) COORDINATE WITH ARCHITECTURAL DRAWING FOR EXACT LOCATION OF DIFFUSER & GRILLES.
 - (24) ALL FIBER GLASS DUCTWORK SHALL BE R=6 INSULATION (1.5 INCHES).
 - (25) NO COMBUSTIBLE MATERIAL SHALL BE ALLOWED INSIDE THE MECHANICAL CLOSET.
 - (26) PROVIDE LOUVER DOOR FOR ALL MECHANICAL CLOSET (TYP).
 - (27) PROVIDE 1" U/C FOR ALL BEDROOM CLOSET (TYP).
- PLEASE REFER TO SHEETS M-200 AND M-201 FOR EXHAUST DUCTWORK.

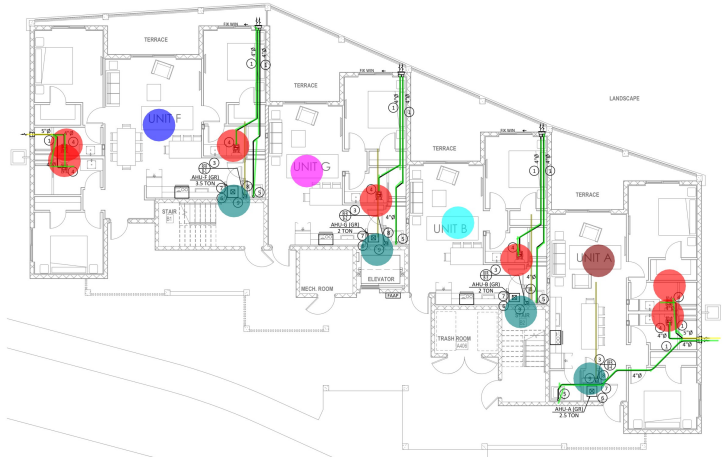
<p>PROJECT ADDRESS: FONTANA APARTMENTS - BUILDING A 13170 FONTANA LAKE WAY, FORT MYERS, FL</p>	<p>MEP Design Group Mechanical Electrical Fire Protection 3800 Professional Blvd. #101 Fort Myer Beach, FL 33909 Phone: 888-888-8888 www.mepdesigngroup.com 10/2/2022</p>
<p>M-300</p>	

- AHU-D,2T 1.0 EA
- AD-A-30CFM,6"x4" 3.0 EA
- AHU-E,2.5T 1.0 EA
- AD-A-30CFM,6"x4" 3.0 EA
- Mi-Thermostat 1.0 EA
- AD-C 4.0 EA
- AD-C 2.0 EA
- Mi-Thermostat 1.0 EA
- SA-16"x6" Supply Duct 17.5 FT
- AD-B-260CFM, 16"x6" 2.0 EA
- SA-12"x6" Supply Duct 4.2 FT
- AD-B-200CFM, 14"x6" 1.0 EA
- SA-12"x6" Supply Duct 9.4 FT
- AD-B-250CFM, 14"x6" 2.0 EA
- SA-10"x6" Supply Duct 2.6 FT
- RA-16"x6" Return Duct 16.9 FT
- AD-B-200CFM, 12"x6" 1.0 EA
- RA-16"x6" Return Duct 9.1 FT
- FL-4" Dia Flexible Duct 17.3 FT
- FL-4" Dia Flexible Duct 10.3 FT
- SA-14"x6" Supply Duct 5.6 FT
- SA-14"x8" Supply Duct 30.7 FT
- AD-A-40CFM,6"x4" 1.0 EA
- AD-B-150CFM,10"x6" 1.0 EA
- FL-8" Dia Flexible Duct 5.1 FT

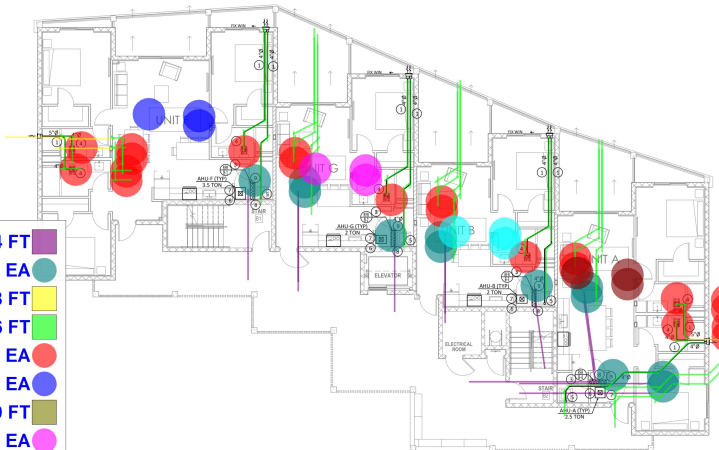


- DRAWING NOTES:**
- (28) PROVIDE INSULATED PLENUM ABOVE & BEHIND ALL GRILLES FOR DUCT CONNECTION (TYP).
 - (29) PROVIDE PROGRAMMABLE THERMOSTAT.
 - (30) COORDINATE WITH ARCHITECTURAL DRAWING FOR EXACT LOCATION OF DIFFUSER & GRILLES.
 - (31) ALL FIBER GLASS DUCTWORK SHALL BE R=6 INSULATION (1.5 INCHES).
 - (32) NO COMBUSTIBLE MATERIAL SHALL BE ALLOWED INSIDE THE MECHANICAL CLOSET.
 - (33) PROVIDE LOUVER DOOR FOR ALL MECHANICAL CLOSET (TYP).
 - (34) PROVIDE 1" U/C FOR ALL BEDROOM CLOSET (TYP).
- PLEASE REFER TO SHEETS M-200 AND M-201 FOR EXHAUST DUCTWORK.

REVISION	
TITLE	MECHANICAL PLAN
PROJECT ADDRESS:	FONTANA APARTMENTS - BUILDING A 13170 FONTANA LAKE WAY, FORT MYERS, FL
 Mechanical Electrical Fire Protection 3000 Professional Blvd. Ft. Myers, FL 33909 Phone: 813.939.1111 www.mepdesigngroup.com	
DN:	Anti-Drain
Checked:	Milo-Magnum
Date:	As Noted
Drawn:	M.F. 2020
Project #:	21010
SHEET:	M-301



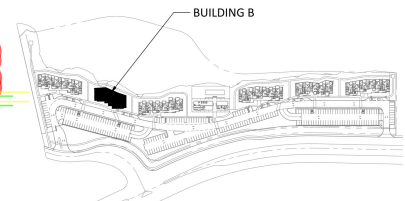
BUILDING B GROUND FLOOR - MECHANICAL PLAN
SCALE: 1/8" = 1'-0"



BUILDING B TYPICAL FLOOR - MECHANICAL PLAN
SCALE: 1/8" = 1'-0"

- NOTES:**
- 1) TOILET EXHAUST AND OTHER EXHAUST DUCTS TO BE CONNECTED TO 12" DIA VENT (MODEL # 04E8 64L-0)
 - 2) REFRIGERANT LINE SHALL BE CONNECTED TO ASSOCIATED AIRPLUMB
 - 3) ALL EXHAUST FANS CONNECTED TO 4" DIA W/ METAL DUCT (SEE SCHEDULE)
 - 4) 2" DIA VENT GALV. SMOOTH PIPE TO W.C. W/ BACK DRAFT DAMPER CONNECTED TO 12" DIA VENT (MODEL # 04E8 64L-0)
 - 5) NO COMBUSTIBLE MATERIAL SHALL BE ALLOWED INSIDE THE MECHANICAL CLOSET.
 - 6) PROVIDE COVER DOOR FOR ALL MECHANICAL CLOSET TYPES
 - 7) ALL REFRIGERANT PIPES SHALL BE IN 2-HR RATED ENCLOSURE TO ROOF. COORDINATED BY ARCHITECT AND STRUCTURAL ENGINEER.
 - 8) PROVIDE 30" DIA (INDIC. CLEAR) 2 HR RATED SHAFT FOR REFRIGERANT PIPES UP TO ROOF. COORDINATED BY ARCHITECT AND STRUCTURAL ENGINEER.

SCHEDULE UNITS IDENTIFICATION		
UNITS NAMES	ARCHITECTURAL IDENT.	SQ. FT.
UNIT A	2-B BLDG UNIT	1,007
UNIT B	3-B CENTER UNIT B	700
UNIT F	1-B	1,350
UNIT G	1-B CENTER UNIT A	720



BUILDING KEY PLAN
NTS

- RF 202.4 FT
- 30"x8" 2HR Rated Sh... 16.0 EA
- EA-5" Dia Exhaust Duct 58.8 FT
- EA-4" Dia Exhaust D... 938.6 FT
- EF-A 28.0 EA
- U-F 4.0 EA
- RF 60.9 FT
- U-G 4.0 EA
- U-B 4.0 EA
- U-A 4.0 EA

REVISION

TITLE
MECHANICAL PLAN

PROJECT ADDRESS:
FONTANA APARTMENTS - BUILDING B
13160 FONTANA LAKE WAY,
FORT MYERS, FL

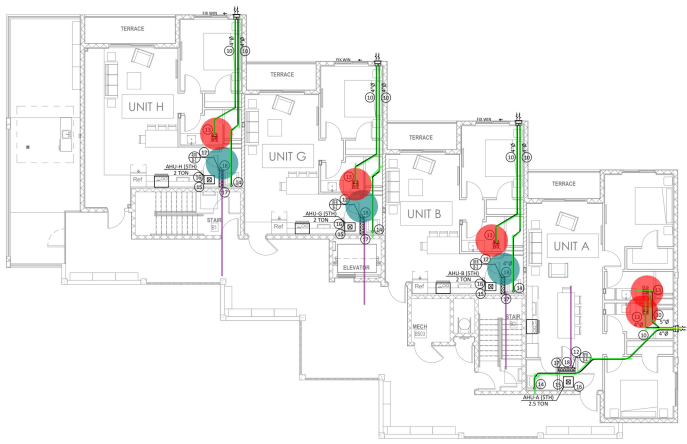
MEP Design Group
Mechanical | Electrical | Fire Protection
3000 Professional Center Blvd., Suite 100
Fort Myers, FL 33901
www.mepdesigngroup.com
Phone: 813.437.4444

PREPARED BY: [Name]
CHECKED BY: [Name]
DATE: 10.7.2022
PROJECT: 230102

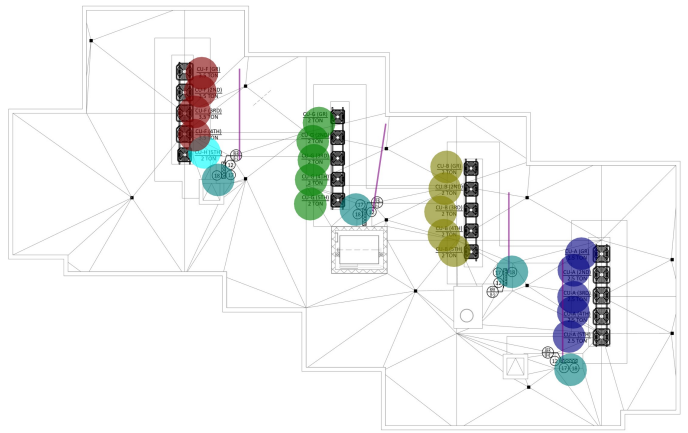
SHEET:
M-200

- CU-H, 2T 1.0 EA
- CU-F, 3.5T 4.0 EA
- CU-G, 2T 5.0 EA
- CU-B, 2T 5.0 EA
- CU-A, 2.5T 5.0 EA
- RF 126.0 FT
- 30"x8" 2HR Rated Shaft 7.0 EA
- EF-A 5.0 EA
- EA-4" Dia Exhaust D... 217.0 FT
- EA-5" Dia Exhaust Duct 4.1 FT

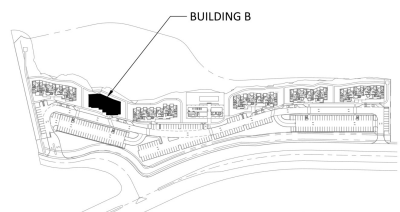
SCHEDULE UNITS IDENTIFICATION		
UNITS NAME	ARCHITECTURAL IDENT.	SQ. FT.
UNIT A	2-B END UNIT	1,030
UNIT B	3-B CENTER UNIT B	700
UNIT G	3-B CENTER UNIT A	710
UNIT H	3-B END UNIT C	860



☀ BUILDING B 5TH FLOOR - MECHANICAL PLAN
SCALE: 1/8" = 1'-0"



☀ BUILDING B ROOF PLAN - MECHANICAL PLAN
SCALE: 1/8" = 1'-0"

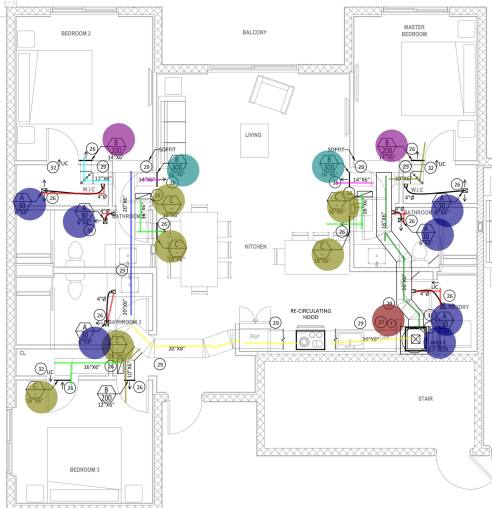


☀ BUILDING KEY PLAN
NTS

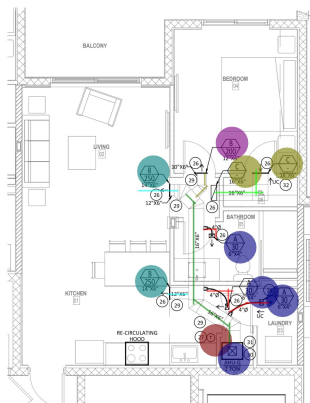
- GENERAL NOTES:**
- 1) EXHAUST AND OTHER EXHAUST DUCTS TO BE CONNECTED TO 3" DIA VENT (MODEL # DHB-64-S)
 - 2) CONSULT WITH STRUCTURAL ENGINEER FOR INSTALLATION OF MECHANICAL EQUIPMENT ON THE ROOF.
 - 3) REFRIGERANT LINE SHALL BE CONNECTED TO ASSOCIATED AREA(S)
 - 4) ALL EXHAUST FAN CONNECTED TO 4" GALV. METAL DUCT OR GALV. METAL DUCT
 - 5) EXHAUST VENT SHALL BE CONNECTED TO 4" GALV. METAL DUCT OR GALV. METAL DUCT
 - 6) ALL EXHAUST VENT SHALL BE 30" DIA VENT (MODEL # DHB-64-S)
 - 7) ALL EXHAUST VENT SHALL BE 30" DIA VENT (MODEL # DHB-64-S)
 - 8) ALL EXHAUST VENT SHALL BE 30" DIA VENT (MODEL # DHB-64-S)
 - 9) ALL EXHAUST VENT SHALL BE 30" DIA VENT (MODEL # DHB-64-S)
 - 10) ALL EXHAUST VENT SHALL BE 30" DIA VENT (MODEL # DHB-64-S)
 - 11) ALL EXHAUST VENT SHALL BE 30" DIA VENT (MODEL # DHB-64-S)
 - 12) ALL EXHAUST VENT SHALL BE 30" DIA VENT (MODEL # DHB-64-S)
 - 13) ALL EXHAUST VENT SHALL BE 30" DIA VENT (MODEL # DHB-64-S)
 - 14) ALL EXHAUST VENT SHALL BE 30" DIA VENT (MODEL # DHB-64-S)
 - 15) ALL EXHAUST VENT SHALL BE 30" DIA VENT (MODEL # DHB-64-S)
 - 16) ALL EXHAUST VENT SHALL BE 30" DIA VENT (MODEL # DHB-64-S)
 - 17) ALL EXHAUST VENT SHALL BE 30" DIA VENT (MODEL # DHB-64-S)
 - 18) ALL EXHAUST VENT SHALL BE 30" DIA VENT (MODEL # DHB-64-S)
 - 19) ALL EXHAUST VENT SHALL BE 30" DIA VENT (MODEL # DHB-64-S)
 - 20) ALL EXHAUST VENT SHALL BE 30" DIA VENT (MODEL # DHB-64-S)

PROJECT ADDRESS: FONTANA APARTMENTS - BUILDING B 13160 FONTANA LAKE WAY, FORT MYERS, FL
PROJECT NO.: MECHANICAL PLAN
DATE: 10.7.2020
DRAWN BY: MECHANICAL PLAN
CHECKED BY: MECHANICAL PLAN
SCALE: MECHANICAL PLAN
SHEET: M-201

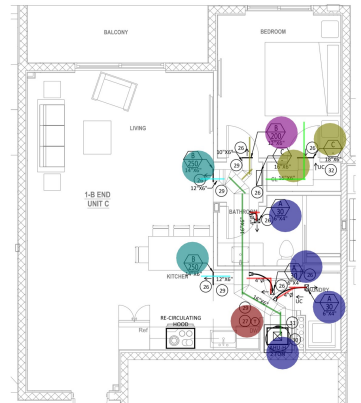
MEP Design Group
Mechanical | Electrical | Plumbing | Fire Protection
3000 Professional Bldg. 301 | Fort Myer Blvd, Ft. Myer, FL 33901
Phone: 813.487.8800 | Fax: 813.487.8801
www.mepdesigngroup.com



UNIT F=3-B - MECHANICAL PLAN
SCALE: 1/4" = 1'-0"



UNIT G=1-B CENTER UNIT A - MECHANICAL PLAN
SCALE: 1/4" = 1'-0"



UNIT H=1-B END UNIT C - MECHANICAL PLAN
SCALE: 1/4" = 1'-0"

- AD-C
- AD-C
- AD-C
- AD-A-300CFM, 8"x4"
- AD-B-200CFM, 12"x6"
- AD-B-200CFM, 12"x6"
- AD-B-250CFM, 14"x6"
- AD-B-250CFM, 14"x6"
- FL-4" Dia Flexible Duct
- AD-A-300CFM, 8"x4"
- AD-A-300CFM, 8"x4"
- RA-16"x6" Return Duct
- AD-B-200CFM, 14"x6"
- FL-4" Dia Flexible Duct
- AD-B-300CFM, 16"x6"
- RA-16"x6" Return Duct
- SA-12"x6" Supply Duct
- SA-16"x6" Supply Duct
- FL-4" Dia Flexible Duct
- SA-16"x6" Supply Duct
- SA-20"x8" Supply Duct
- SA-12"x6" Supply Duct
- SA-10"x6" Supply Duct
- SA-20"x8" Supply Duct
- AHU-H, 2T
- SA-16"x6" Supply Duct
- SA-14"x6" Supply Duct
- SA-12"x6" Supply Duct
- SA-10"x6" Supply Duct
- Mi-Thermostat
- Mi-Thermostat
- Mi-Thermostat
- SA-16"x6" Supply Duct
- SA-10"x6" Supply Duct
- AHU-G, 2T
- AHU-F, 3.5T

- 6.0 EA
- 2.0 EA
- 6.0 EA
- 1.0 EA
- 2.0 EA
- 2.0 EA
- 8.7 FT
- 3.0 EA
- 3.0 EA
- 8.6 FT
- 2.0 EA
- 16.2 FT
- 2.0 EA
- 6.7 FT
- 4.8 FT
- 17.0 FT
- 16.4 FT
- 19.6 FT
- 22.3 FT
- 5.4 FT
- 4.7 FT
- 12.7 FT
- 1.0 EA
- 16.0 FT
- 5.2 FT
- 4.7 FT
- 2.5 FT
- 1.0 EA
- 1.0 EA
- 1.0 EA
- 15.4 FT
- 11.4 FT
- 1.0 EA
- 1.0 EA

DRAWING NOTES:

- 26 PROVIDE INSULATED PLENUM ABOVE & BEHIND ALL GRILLES FOR DUCT CONNECTION (TYP).
- 27 PROVIDE PROGRAMMABLE THERMOSTAT.
- 28 COORDINATE WITH ARCHITECTURAL DRAWING FOR EXACT LOCATION OF DIFFUSER & GRILLES.
- 29 ALL FIBER GLASS DUCTWORK SHALL BE R=6 INSULATION (1.5 INCHES).
- 30 NO COMBUSTIBLE MATERIAL SHALL BE ALLOWED INSIDE THE MECHANICAL CLOSET.
- 31 PROVIDE LOUVER DOOR FOR ALL MECHANICAL CLOSET (TYP).
- 32 PROVIDE 1" U/C FOR ALL BEDROOM CLOSET (TYP).

PLEASE REFER TO SHEETS M-200 AND M-201 FOR EXHAUST DUCTWORK.

PROJECT ADDRESS: FONTANA APARTMENTS - BUILDING B 13160 FONTANA LAKE WAY, FORT MYERS, FL
PROJECT NO.: SHEET NO.: DATE:
TITLE: MECHANICAL PLAN
DRAWN BY: CHECKED BY: PROJECT MANAGER:
PROJECT ADDRESS: FONTANA APARTMENTS - BUILDING B 13160 FONTANA LAKE WAY, FORT MYERS, FL
MEP Design Group Mechanical Electrical Fire Protection 3000 Professional Blvd., Suite 1100 Fort Myers, FL 33901 Phone: 941.933.4444 www.mepdesigngroup.com
IN: Auto-Draw Date: As Noted Date: 10/2/2020 Project: 13160
SHEET: M-301

• U-A	3.0 EA	• U-G	6.0 EA
• U-C	3.0 EA	• U-D	3.0 EA
• U-E	3.0 EA	• EA-5" Dia Exhaust Duct	20.3 FT
• EA-5" Dia Exhaust Duct	20.3 FT	• 30"x8", 2HR Rated S...	12.0 EA
• 30"x8", 2HR Rated S...	12.0 EA	• 24"x8", 2HR Rated Sh...	6.0 EA
• 24"x8", 2HR Rated Sh...	6.0 EA	• RF	576.3 FT
• RF	576.3 FT	• EF-A	27.0 EA
• EF-A	27.0 EA	• EA-4" Dia Exhaust ...	1044.5 FT
• EA-4" Dia Exhaust ...	1044.5 FT		

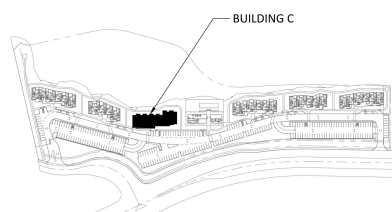


BUILDING C GROUND FLOOR - MECHANICAL PLAN
SCALE: 1/8" = 1'-0"



BUILDING C TYPICAL FLOOR - MECHANICAL PLAN
SCALE: 1/8" = 1'-0"

- NOTING NOTES:**
- 1. TYPICAL TERRACE AND DRIVE EXHAUST DUCTS TO BE CONNECTED TO 12" DIA VENT MODEL # DHE8-64-S.
 - 2. COORDINATE WITH STRUCTURAL ENGINEER FOR INSTALLATION OF MECHANICAL EQUIPMENT ON THE ROOF.
 - 3. REFRIGERANT LINE SHALL BE CONNECTED TO ASSOCIATED AHU'S LEHS.
 - 4. ALL EXHAUST FANS CONNECTED TO 4" DIA METAL DUCT (OR GANGE MANIFOLD).
 - 5. IF EXHAUST VENT GAUG. SMOOTH PIPE TO W.C. W/ BACK DRAFT DAMPER CONNECTED TO 12" DIA VENT (MODEL # DHE8-64-S).
 - 6. NO COMBUSTIBLE MATERIAL SHALL BE ALLOWED INSIDE THE MECHANICAL CLOSET.
 - 7. PROVIDE LOCKER DOOR FOR ALL MECHANICAL CLOSET PIPES.
 - 8. ALL REFRIGERANT PIPES SHALL BE IN 2HR RATED ENCLOSURE TO ROOF. COORDINATED W/ ARCHITECT AND STRUCTURAL ENGINEER.
 - 9. PROVIDE 24" DIA BRIDGE CLEARLY 2 HR RATED SHIRT FOR REFRIGERANT PIPES UP TO ROOF. COORDINATED W/ ARCHITECT AND STRUCTURAL ENGINEER.
 - 10. PROVIDE 24" DIA BRIDGE CLEARLY 2 HR RATED SHIRT FOR REFRIGERANT PIPES UP TO ROOF. COORDINATED W/ ARCHITECT AND STRUCTURAL ENGINEER.



BUILDING KEY PLAN
NTS

<p>PROJECT ADDRESS: FONTANA APARTMENTS - BUILDING C 13150 FONTANA LAKE WAY, FORT MYERS, FL</p>	<p>MEP Design Group Mechanical Electrical Plumbing Fire Protection 3000 Professional Bldg. 1st Fl. Fort Myer Blvd., Ft. Myers, FL 33901 Phone: 813.939.8888 www.mepdesigngroup.com</p>
<p>DATE: 10.7.2022 PROJECT: 23012</p>	
<p>M-200</p>	

- 24"x8", 2HR Rated Sh... 3.0 EA
- EA-4" Dia Exhaust D... 526.1 FT
- EA-5" Dia Exhaust Duct 6.6 FT
- EF-A 14.0 EA
- RF 300.0 FT
- U-A 0.0 EA
- U-C 2.0 EA
- U-D 2.0 EA
- U-G 3.0 EA
- U-E 2.0 EA
- 30"x8", 2HR Rated S... 10.0 EA

SO.FT.	750	5,000	750
UNIT E	UNIT D	UNIT C	UNIT G

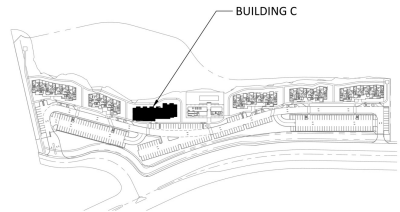


BUILDING C 4TH FLOOR - MECHANICAL PLAN
SCALE: 1/8" = 1'-0"



BUILDING C 5TH FLOOR - MECHANICAL PLAN
SCALE: 1/8" = 1'-0"

- REVISIONS:**
- | NO. | DATE | DESCRIPTION |
|-----|------|-------------|
| | | |
| | | |
| | | |
| | | |
- MECHANICAL PLAN**
- PROJECT ADDRESS:**
FONTANA APARTMENTS - BUILDING C
13150 FONTANA LAKE WAY,
FORT MYERS, FL
- MEP Design Group**
Mechanical | Electrical | Fire Protection
13000 Professional Blvd. Ste 101 Fort Lauderdale, FL 33309
Phone: 954.333.3333
www.mepdesigngroup.com
MEP Design Group, Inc. is an Equal Opportunity Employer
- PREPARED BY:** Auto-Draw
CHECKED BY: Mike Maguire
DATE: As Noted
DATE: 10.7.2022
PROJECT: 230102
- SHEET:**
M-201



BUILDING KEY PLAN
NTS

