

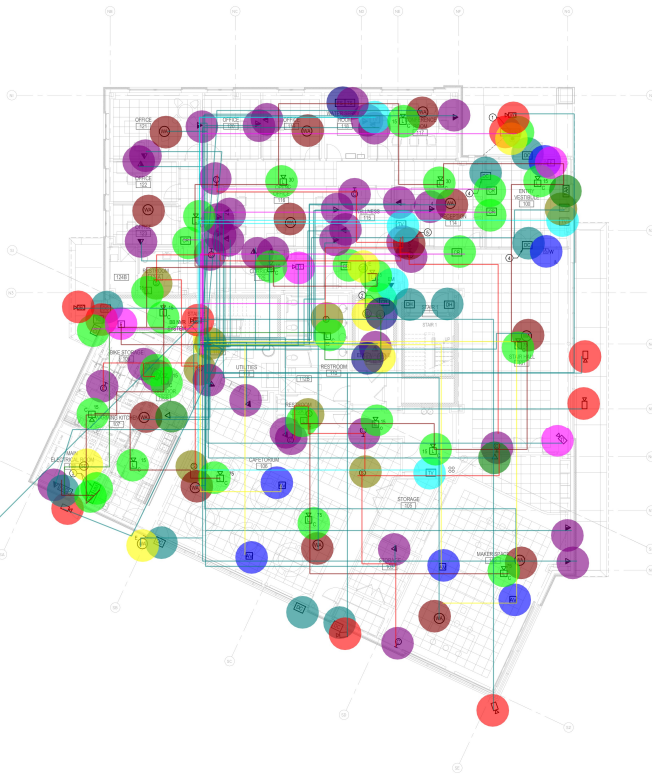
GENERAL NOTES

1. x

KEY NOTES (NEW WORK)

1. PROVIDE 1/4" CONDUIT FOR LOW VOLTAGE AND POWER WIREDS FROM BUILDING TO THE INTERSECTION OF THROUGH BUILDING FOR CONDUIT. COORDINATE AND PROVIDE COORDINATE WITH LOW VOLTAGE INSTALLER FOR WIRE DETAILS.
2. CONDUIT TO BE INSTALLED IN THE ELEVATOR SHAFT.
3. CONDUIT TO BE INSTALLED IN THE ELEVATOR SHAFT.
4. DOOR CONTROLS TO BE CONTROLLED FROM RECEPTION DESK USING A KEYCODE SYSTEM.
5. DOOR CONTROL SWITCH TO OPEN DOOR. REFER TO SECURITY INSTALLER FOR WIRE INFORMATION.

• 4 - Telephone/Data Outlet	1.0 EA
• 360° SECURITY CAMERA	3.0 EA
• AV SYSTEM SPEAKER, WALL MTD	4.0 EA
• CLASSROOM CLOCK SYSTEM CLOCK OUTLET WIT...	12.0 EA
• CR - Card Reader	9.0 EA
• Data Outlet	2.0 EA
• DC - Door Contact	7.5 EA
• DH - Door Holder	2.0 EA
• Door Control Switch	1.0 EA
• Fire Alarm Annunciator Panel	1.0 EA
• Fire Alarm Audio Visual, 15CD	11.0 EA
• Fire Alarm Audio Visual, 30CD	2.0 EA
• Fire Alarm Audio Visual, 75CD	4.0 EA
• Fire Alarm Control Panel	1.0 EA
• Fire Alarm Manual Pull Station	2.0 EA
• Fire Alarm Visual Only, 15CD	3.0 EA
• Flow Switch	1.0 EA
• HANDICAP DOOR OPERATOR	1.0 EA
• Heat Detector	2.0 EA
• Intercom	2.0 EA
• MM - Monitor Module	2.0 EA
• PA System Speakers	6.0 EA
• Security BB NVR System	1.0 EA
• SECURITY CAMERA	6.0 EA
• Smoke Detector	3.0 EA
• Smoke Detector, ELEVATOR RECALL	1.0 EA
• Telephone/Data Outlet	27.0 EA
• Temper Switch	1.0 EA
• THERMAL IMAGING (TI) CAMERA	2.0 EA
• TV Outlet	4.0 EA
• TWO WAY COMMUNICATION/ EMERGENCY PHONE ...	1.0 EA
• Two-Communication Control Panel	1.0 EA
• WA - Wireless Access Point	12.0 EA
• WAVE ACTUATOR OPERATOR	2.0 EA
• WIRELESS ACCESS POINT, EXTERIOR WALL MTD	1.0 EA
■ CAT 6 Cable	2639.5 FT
■ CAT 6 Cable	796.9 FT
■ 2#14 PA Speaker Cable	404.1 FT
■ 2#18 AV AWG Speaker Cable	330.3 FT
■ 8#20 Shielded Cable, 8#18 Shielded Pair Cable	621.7 FT
■ RG6 Coaxial Cable (For TV Outlet)	329.8 FT
■ 2#14 FPLP Cable	570.3 FT
■ 2#16 FPLP Cable	127.6 FT



1 FIRST FLOOR PLAN - FIRE ALARM AND SPECIAL SYSTEMS
SCALE: 1/8" = 1'-0"

THEARC IV
The Washington
School for Girls
1885 Massachusetts Ave SE
Washington DC 20020

SANCHEZ PALMER
ARCHITECTS, PC
215 N. Fourth Street, Ste. 303
Alexandria, Virginia 22314
703.946.4022 phone

2RW
Consultants Inc.
2677 Prosperity Ave, Ste 275
Falls Church, Virginia 22031
703.714.4355 phone

MCC 1200
Architectural
Engineers
210 North Lee St., Ste 210
Alexandria, Virginia 22314
703.961.4151 phone

Lorax
Partnerships LLC
55 W. Lombard St.
Baltimore, Maryland 21201
410.961.0217 phone

VIKA Capitol LLC
4910 Massachusetts Ave NW
Suite 10
Washington, DC 20016
202.344.4400 phone

Culinary Advisors
3734 Green Shaw Court
Elkton City, MD 21042
410.791.9670 phone

Penn District
1220 Oregon Street NE
Washington, DC 20002
202.770.9622 phone

No. Revision: Date:
800 SET 11/10/2020

SEAL:

NOT FOR
CONSTRUCTION

Sheet Title:
FIRST FLOOR PLAN -
FIRE ALARM AND
SPECIAL SYSTEMS

Drawn By: Checked By:
CS BSW
Project No.: Date:
2111020200 March 31, 2020
844251 HQ

E401

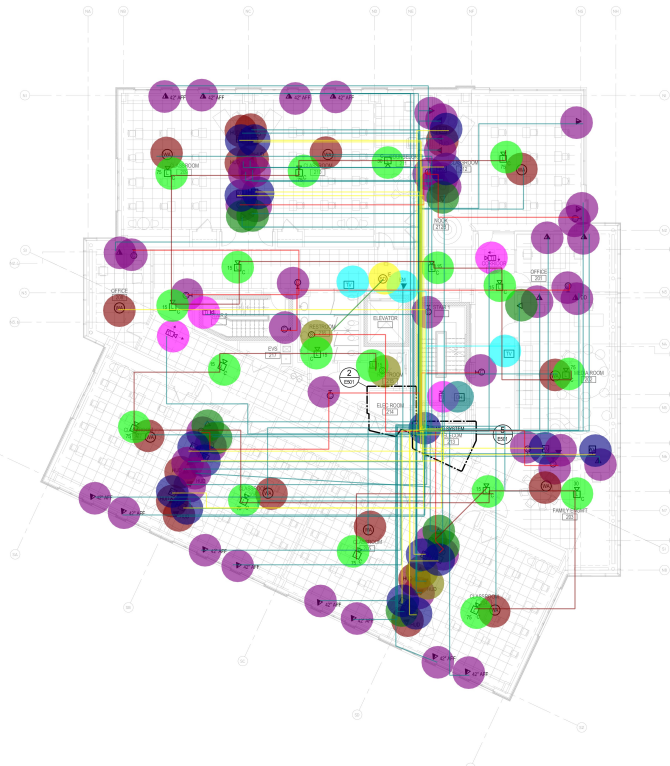
GENERAL NOTES

1. x

KEY NOTES (NEW WORK)

1. xxx

- Telephone/Data Out... 25.0 EA
- Telephone/Data Outl... 1.0 EA
- VOICE/DATA OUTLET 10.0 EA
- VOICE/DATA OUTLET 1.0 EA
- DATA OUTLET: MO... 2.0 EA
- AV SYSTEM SPEA... 16.0 EA
- Fire Alarm Audio Vis... 8.0 EA
- WA - Wireless Acce... 10.0 EA
- Fire Alarm Audio Vis... 7.0 EA
- Fire Alarm Audio Vis... 2.0 EA
- CLASSROOM CLO... 19.0 EA
- Data Outlet 8.0 EA
- TWO WAY COMMU... 1.0 EA
- Smoke Detector, EL... 1.0 EA
- THERMAL IMAGING... 4.0 EA
- TV Outlet 2.0 EA
- DH - Door Holder 1.0 EA
- PA System Speakers 2.0 EA
- Voice Outlet 6.0 EA
- Fire Alarm Visual Onl... 1.0 EA
- Security IT NVR Sys... 1.0 EA
- RG6 Coaxial Cable ... 84.8 FT
- CAT 6 Cable 4078.8 FT
- CAT 6 Cable 206.2 FT
- 2#18 AV AWG Sp... 1094.5 FT
- 2#14 PA Speaker ... 423.9 FT
- 2#14 FPLP Cable 496.6 FT
- 2#16 FPLP Cable 15.0 FT



1 SECOND FLOOR PLAN - FIRE ALARM AND SPECIAL SYSTEMS
SCALE: 1/8" = 1'-0"

THEARC IV
The Washington
School for Girls
1885 Massachusetts Ave SE
Washington DC 20020

SANCHEZ PALMER
ARCHITECTS, PC
215 N Payne Street, Ste. 303
Alexandria, Virginia 22314
703.946.4022 phone

2RW
Consultants Inc.
2677 Prosperity Ave, Ste 275
Falls Church, Virginia 22031
703.714.4355 phone

MCC 1200
Architectural
Engineers
210 North Lee St., Ste 210
Alexandria, Virginia 22314
703.961.4151 phone

Lorax
Partnerships LLC
65 W. Hampton St.
Baltimore, Maryland 21201
410.942.0277 phone

VIKA Capitol LLC
4910 Massachusetts Ave NW
Suite 50
Washington, DC 20016
202.344.4400 phone

Culinary Advisors
3724 Orono Blvd Court
Elkoot City, MD 21042
410.760.9670 phone

Penn District
1220 Orono Street NE
Washington, DC 20002
202.770.9622 phone

No. Revision: Date:
860.567 11/10/2023

SEAL:

NOT FOR
CONSTRUCTION

Sheet Title:
SECOND FLOOR PLAN
- FIRE ALARM AND
SPECIAL SYSTEMS

Drawn By: Checked by:
CS BSW
Project No.: Date:
211102210 March 31, 2023
864521 HQ

E402

GENERAL NOTES

1. REFER TO MECHANICAL PLANS FOR EXACT DETECT DETECTOR LOCATIONS AND DUCTWORK.

KEY NOTES (NEW WORK)

1. XXX

THEARC IV
The Washington
School for Girls
1882 Massachusetts Ave SE
Washington DC 20020

SANCHEZ PALMER
ARCHITECTS, PC
210 N Payne Street, Ste. 301
Alexandria, Virginia 22314
703.946.4022 phone

2RW
Consultants Inc.
2677 Prosperity Ave, Ste 275
Falls Church, Virginia 22031
703.714.4355 phone

MCC 1200
Architectural
Engineers
210 North Lee St, Ste 210
Alexandria, Virginia 22314
703.961.4151 phone

Lorax
Partnerships LLC
66 W Hamilton St
Baltimore, Maryland 21201
410.962.0277 phone

VIKA Capitol LLC
4910 Massachusetts Ave NW
Suite 50
Washington, DC 20016
202.344.4400 phone

Culinary Advisors
3724 Oran Blvd Court
Elkoot City, MD 21042
410.761.9678 phone

Penn District
1220 Oran Street NE
Washington, DC 20002
202.770.9622 phone

No. Revision: Date:
860.567 11/10/2023

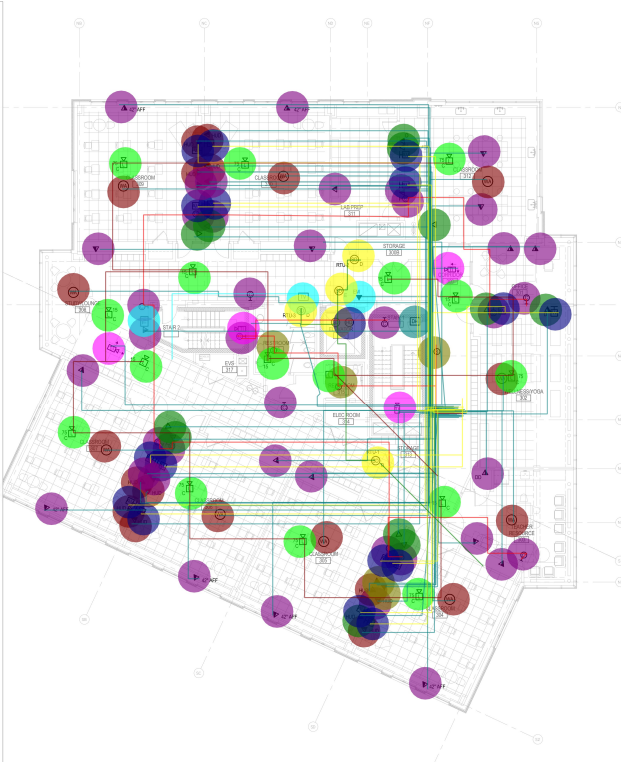
SEAL
NOT FOR CONSTRUCTION

Sheet Title:
THIRD FLOOR PLAN - FIRE ALARM AND SPECIAL SYSTEMS

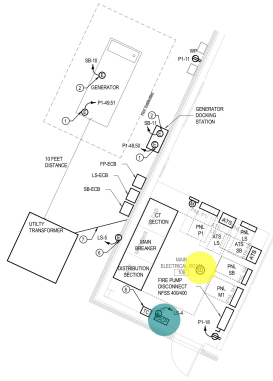
Drawn By: Checked by:
CS BSW
Project No.: Date:
211102210 March 31, 2023
864251 HQ

E403

- Security IT NVR System **0.0 EA**
- PA System Speakers **2.0 EA**
- PA System Speakers, Wall Mou... **1.0 EA**
- CLASSROOM CLOCK SYSTE... **15.0 EA**
- THERMAL IMAGING (TI) CAME... **4.0 EA**
- Telephone/Data Outlet **22.0 EA**
- Telephone/Data Outlet - QUAD ... **0.0 EA**
- WA - Wireless Access Point **10.0 EA**
- Data Outlet **8.0 EA**
- TV Outlet **2.0 EA**
- TWO WAY COMMUNICATION/ ... **1.0 EA**
- VOICE/DATA OUTLET WITH CO... **10.0 EA**
- VOICE/DATA OUTLET WITH COV... **3.0 EA**
- VOICE/DATA OUTLET WITH COV... **1.0 EA**
- DATA OUTLET: MOUNTED AT ... **2.0 EA**
- AV SYSTEM SPEAKER, WALL... **16.0 EA**
- Voice Outlet **4.0 EA**
- Fire Alarm Audio Visual, 15CD **7.0 EA**
- Fire Alarm Audio Visual, 30CD **0.0 EA**
- Fire Alarm Visual Only, 15CD **1.0 EA**
- Fire Alarm Audio Visual, 75CD **8.0 EA**
- Smoke Detector, ELEVATOR R... **1.0 EA**
- DH - Door Holder **1.0 EA**
- Duct Smoke Detector **3.0 EA**
- Smoke Detector **1.0 EA**
- Heat Detetor **1.0 EA**
- RG6 Coaxial Cable (For TV Out... **41.0 FT**
- CAT 6 Cable **4217.8 FT**
- CAT 6 Cable **200.4 FT**
- 2#14 PA Speaker Cable **397.2 FT**
- 2#18 AV AWG Speaker Cable **1159.0 FT**
- 2#14 FPLP Cable **478.9 FT**
- 2#16 FPLP Cable **94.2 FT**



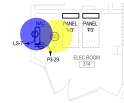
1 THIRD FLOOR PLAN - FIRE ALARM AND SPECIAL SYSTEMS
SCALE: 1/8" = 1'-0"



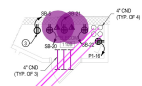
1 MAIN ELEC. RM & GENERATOR YARD
SCALE: 1/4" = 1'-0"



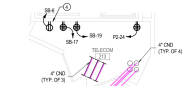
2 2ND FLOOR ELEC ROOM
SCALE: 1/4" = 1'-0"



3 3RD FLOOR ELEC ROOM
SCALE: 1/4" = 1'-0"



4 1ST FLOOR TELECOM ROOM
SCALE: 1/4" = 1'-0"



5 2ND FLOOR TELECOM ROOM
SCALE: 1/4" = 1'-0"

- Telephone/Data O... 2.0 EA
- Fire Alarm Control ... 1.0 EA
- Fire Alarm Audio Vi... 1.0 EA
- Smoke Detector 3.0 EA
- NAC Panel - Fire A... 2.0 EA
- 4"C EMT W/ Pull ... 108.3 FT

GENERAL NOTES

1. EQUIPMENT CONNECTION TO BOOK HEATER.
2. EQUIPMENT CONNECTION TO BATTERY CHARGER.
3. SECURITY IS A NEAR SYSTEM. COORDINATE WITH SECURITY CONTRACTOR FOR REQUIRED RECEPTACLES AND ADDITIONAL REQUIREMENTS.
4. SECURITY TIME SYSTEM COORDINATE WITH SECURITY CONTRACTOR FOR REQUIRED RECEPTACLES AND ADDITIONAL REQUIREMENTS.
5. PROVIDE CONDUIT IN 1" TANGLED CONDUIT. CONDUIT SHALL BE INSTALLED ON THE ROOF. TANGLED CONDUIT SHALL BE INSTALLED ON THE EXTERIOR. SEE ONLY TANGLED CONDUIT WHEN PHOTOCELLS ARE WEALED.
6. PROVIDE CONNECTION FOR WIRE IN CONDUIT. WIRE THROUGH WOODS SHALL BE APPROVED BY SPARKLE CONTRACTOR. COORDINATE WITH THE CONTRACTOR.
7. PREPARE SECONDARY CONSULTANTS. REFER TO PREPARED FOR ADDITIONAL REQUIREMENTS.

KEY NOTES (NEW WORK)

- THEARC IV**
The Washington School for Girls
1885 Massachusetts Ave SE
Washington DC 20020
- SANCHEZ PALMER ARCHITECTS, PC**
215 N. Payne Street, Ste. 303
Alexandria, Virginia 22314
703.946.4222 phone
- 2RW Consultants Inc.**
2677 Prosperity Ave, Ste 275
Farmingdale, Virginia 22031
703.734.4255 phone
- MCC 1200 Architectural Engineers**
210 North Lee St., Ste. 210
Alexandria, Virginia 22314
703.961.4151 phone
- Lorax Partnerships LLC**
55 W. Hamilton St.
Baltimore, Maryland 21201
410.962.0217 phone
- VIKA Capitol LLC**
4910 Massachusetts Ave NW
Suite 10
Washington, DC 20016
202.344.4400 phone
- Culinary Advisors**
3734 Omaha Blvd Court
Elkridge City, MD 21042
410.760.9670 phone
- Penn District**
1220 Oregon Street NE
Washington, DC 20002
202.770.9622 phone

No.	Revision	Date
860	SET	11/10/2023

SEAL:

NOT FOR CONSTRUCTION

Sheet Title:
ENLARGED PLANS

Drawn By:	Checked By:
CS	EW
Project No.:	Date:
211102210	March 31, 2023
864871 NCL	

E501