

CODED NOTES

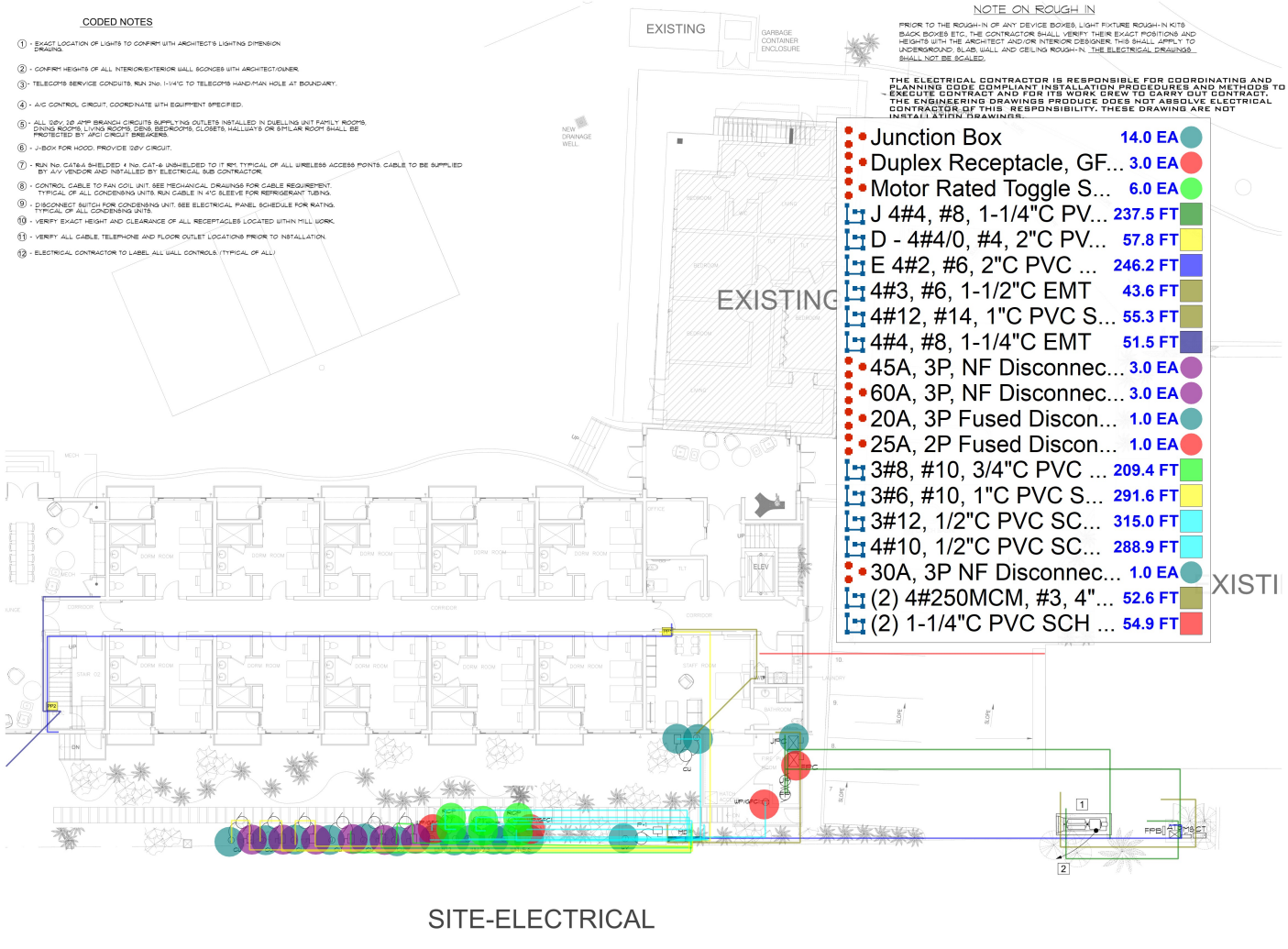
- 1) - EXACT LOCATION OF LIGHTS TO CORRELATE WITH ARCHITECT'S LIGHTING DIMENSION DRAWING.
- 2) - CONFIRM HEIGHTS OF ALL INTERIOR/EXTERIOR WALL SCANCES WITH ARCHITECT/OWNER.
- 3) - TELECOM SERVICE CONDUITS RUN 2" IN 1" VAC TO TELECOM'S HAND-PLAN HOLE AT BOUNDARY.
- 4) - A/C CONTROL CIRCUIT, COORDINATE WITH EQUIPMENT SPECIFIED.
- 5) - ALL 120V 30 AMP BRANCH CIRCUITS SUPPLYING OUTLETS INSTALLED IN KITCHENS, FAMILY ROOMS, DINING ROOMS, LIVING ROOMS, BENS, BEDROOMS, CLOSETS, HALLWAYS OR SIMILAR ROOM SHALL BE PROTECTED BY AFCI CIRCUIT BREAKERS.
- 6) - J-BOX FOR HOOD, PROVIDE ISBY CIRCUIT.
- 7) - RUN NO. CAT-6A SHIELDED 1 NO. CAT-6 UNSHIELDED TO IT PER TYPICAL OF ALL WIRELESS ACCESS POINTS CABLE TO BE SUPPLIED BY A/V VENDOR AND INSTALLED BY ELECTRICAL SUB CONTRACTOR.
- 8) - CONTROL CABLE TO FAN COIL UNIT (SEE MECHANICAL DRAWINGS FOR CABLE REQUIREMENT, TYPICAL OF ALL CONDENSING UNITS RUN CABLE IN PVC SLEEVES FOR REFRIGERANT TUBING).
- 9) - DISCONNECT SWITCH FOR CONDENSING UNIT (SEE ELECTRICAL PANEL SCHEDULE FOR RATINGS, TYPICAL OF ALL CONDENSING UNITS).
- 10) - VERIFY EXACT HEIGHT AND CLEARANCE OF ALL RECEPTACLES LOCATED WITHIN MILL WORK.
- 11) - VERIFY ALL CABLE, TELEPHONE AND FLOOR OUTLET LOCATIONS PRIOR TO INSTALLATION.
- 12) - ELECTRICAL CONTRACTOR TO LABEL ALL WALL CONTROLS (TYPICAL OF ALL)

NOTE ON ROUGH-IN

PRIOR TO THE ROUGH-IN OF ANY DEVICE BOXES, LIGHT FIXTURE ROUGH-IN KITS, SWITCH BOXES ETC., THE CONTRACTOR SHALL VERIFY THEIR EXACT POSITIONS AND HEIGHTS WITH THE ARCHITECT AND/OR INTERIOR DESIGNER. THIS SHALL APPLY TO UNDERGROUND SLAB WALL AND CEILING ROUGH-IN. THE ELECTRICAL DRAWINGS SHALL NOT BE SCALED.

THE ELECTRICAL CONTRACTOR IS RESPONSIBLE FOR COORDINATING AND PLANNING CODE COMPLIANT INSTALLATION PROCEDURES AND METHODS TO EXECUTE CONTRACT AND FOR ITS WORK CREW TO CARRY OUT CONTRACT. THE ENGINEERING DRAWINGS PROVIDED DOES NOT ABSOLVE ELECTRICAL CONTRACTOR OF THIS RESPONSIBILITY. THESE DRAWINGS ARE NOT INSTALLATION DRAWINGS.

• Junction Box	14.0 EA	●
• Duplex Receptacle, GF...	3.0 EA	●
• Motor Rated Toggle S...	6.0 EA	●
J 4#4, #8, 1-1/4" PVC...	237.5 FT	■
D - 4#4/0, #4, 2" PVC...	57.8 FT	■
E 4#2, #6, 2" PVC ...	246.2 FT	■
4#3, #6, 1-1/2" EMT	43.6 FT	■
4#12, #14, 1" PVC S...	55.3 FT	■
4#4, #8, 1-1/4" EMT	51.5 FT	■
• 45A, 3P, NF Disconnec...	3.0 EA	●
• 60A, 3P, NF Disconnec...	3.0 EA	●
• 20A, 3P Fused Discon...	1.0 EA	●
• 25A, 2P Fused Discon...	1.0 EA	●
J 3#8, #10, 3/4" PVC ...	209.4 FT	■
J 3#6, #10, 1" PVC S...	291.6 FT	■
J 3#12, 1/2" PVC SC...	315.0 FT	■
J 4#10, 1/2" PVC SC...	288.9 FT	■
• 30A, 3P NF Disconnec...	1.0 EA	●
J (2) 4#250MCM, #3, 4"...	52.6 FT	■
J (2) 1-1/4" PVC SCH ...	54.9 FT	■



REVISION	BY	DATE

WORK SHALL BE CONDUCTED AS SHOWN IN THESE PLANS SUBJECT TO THE REQUIREMENTS OF THE CONTRACT AND ALL APPLICABLE CODES. IF ANY DISCREPANCY OR CONFLICT IS FOUND, THE CONTRACTOR SHALL CONTACT THE ARCHITECT IMMEDIATELY FOR CLARIFICATION. THE CONTRACTOR SHALL BE RESPONSIBLE FOR OBTAINING ALL NECESSARY PERMITS AND APPROVALS FROM THE LOCAL AUTHORITIES. THE CONTRACTOR SHALL MAINTAIN ACCESS TO ALL UTILITIES AND STRUCTURES AT ALL TIMES. THE CONTRACTOR SHALL BE RESPONSIBLE FOR PROTECTING ALL EXISTING UTILITIES AND STRUCTURES. THE CONTRACTOR SHALL BE RESPONSIBLE FOR OBTAINING ALL NECESSARY PERMITS AND APPROVALS FROM THE LOCAL AUTHORITIES. THE CONTRACTOR SHALL MAINTAIN ACCESS TO ALL UTILITIES AND STRUCTURES AT ALL TIMES.

PROJECT INFORMATION
KINGS BEACH LODGE
WEST BAY STREET
NASSAU, BAHAMAS

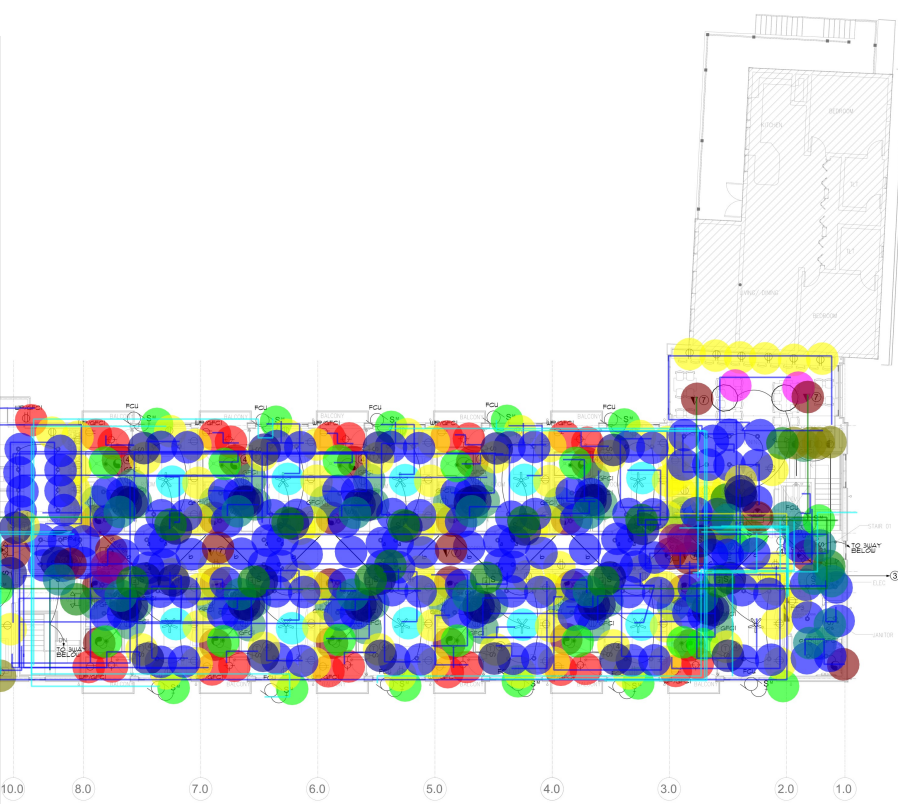
EDS
ELECTRICAL DESIGN & SERVICES LTD.
 P.O. Box 23, 11860
 Nassau, Bahamas
 e-mail: info@edservices.com
 TEL: (242) 377-2022
 FAX: (242) 377-2021
 Electrical, Fire Protection,
 HVAC & Plumbing Designs
 Designing for the 21st Century
 And Beyond

DATE: 29/07/23
 DESIGNED BY: RASHI
 DRAWN BY: RASHI
 REVIEWED BY: RASHI
 SCALE: 1/8"=1'-0"

SHEET #:
E1-OF-6

SITE-ELECTRICAL

- Junction Box 8.0 EA
- Paddle Fan 10.0 EA
- Ceiling Mounted Wash... 23.0 EA
- Duplex Receptacle, G... 17.0 EA
- Duplex Receptacle, G... 37.0 EA
- Motor Rated Toggle S... 14.0 EA
- Double Duplex Recepta... 0.0 EA
- Duplex Receptacle 80.0 EA
- Simplex Receptacle 10.0 EA
- Recessed Down Light 129.0 EA
- Decorative Ceiling Mou... 5.0 EA
- Exit Sign Light W/ Emer... 6.0 EA
- Two Headed Emergenc... 5.0 EA
- Wall Mounted Lighting ... 11.0 EA
- Recessed VP Downlight 12.0 EA
- 8'-6" Linear Light Fixture 13.0 EA
- Exit Sign Light Fixture 0.0 EA
- 2x2' Recessed Light Fix... 0.0 EA
- Telephone Data Outlet 7.0 EA
- T- Thermostat 13.0 EA
- Data Outlet 0.0 EA
- Single Pole Switch 50.0 EA
- 3 Way Switch 4.0 EA
- Wall Mounted Occupa... 16.0 EA
- Wall Mounted 3 Way O... 2.0 EA
- Single Pole Fan Switch 11.0 EA
- 20A, 1P NF Disconnect ... 0.0 EA
- 30A, 3P NF Disconnect ... 0.0 EA
- 3#10, 1/2" C EMT 3339.2 FT
- (2) CAT 6 Cable 394.5 FT
- 3#12, 1/2" C EMT 278.5 FT
- 3#6, #10, 1" C EMT 38.9 FT
- 4#12, 1/2" C EMT 761.0 FT
- Linear Light On stair side 16.1 FT



FIRST-FLOOR-ELECTRICAL

REVISION	BY	DATE

LAYOUT SHALL BE CONSIDERED AS DESIGNED IN THE FIELD AND SUBJECT TO THE LOCAL CODES AND REGULATIONS. THE CONTRACTOR SHALL BE RESPONSIBLE FOR OBTAINING ALL NECESSARY PERMITS AND APPROVALS. PLEASE CONTACT US TO DESIGN DEPARTMENT FOR THE LATEST APPROVALS OF THE REQUIRED CODES.

THIS DRAWING IS PROVIDED BY EDS IN WHOLE OR IN PART FOR THE EXCLUSIVE USE OF THE CLIENT AND IS NOT TO BE REPRODUCED, COPIED, OR TRANSMITTED IN ANY FORM OR BY ANY MEANS, ELECTRONIC OR MECHANICAL, INCLUDING PHOTOCOPYING, RECORDING, OR BY ANY INFORMATION STORAGE AND RETRIEVAL SYSTEM, WITHOUT THE WRITTEN PERMISSION OF EDS. ANY UNAUTHORIZED USE OF THIS DRAWING IS STRICTLY PROHIBITED.

THE ELECTRICAL CONTRACTOR SHALL BE RESPONSIBLE FOR OBTAINING ALL NECESSARY PERMITS AND APPROVALS. PLEASE CONTACT US TO DESIGN DEPARTMENT FOR THE LATEST APPROVALS OF THE REQUIRED CODES.

PROJECT INFORMATION
KINGS BEACH LODGE
WEST BAY STREET
NASSAU, BAHAMAS

EDS
ELECTRICAL DESIGN & SERVICES LTD.
 P.O. Box 22, 11860
 Nassau, Bahamas
 e-mail: info@eds.com
 Cell: (242) 377-8222
 Fax: (242) 377-8221
 Electrical, Fire Protection,
 HVAC & Plumbing Designs
 Designing For The 21st Century
 And Beyond!

DATE: 29/07/23
 DESIGNED BY: RASII
 DRAWN BY: RASII
 REVIEWED BY: RASII
 SCALE: 1/8"=1'-0"

SHEET #:
E3-OF-6

© 2013 EDS, DESIGN & SERVICES LTD.

LEGEND	
SD	CEILING SMOKE DETECTOR, MODEL SIGA-FIS
SH	SMOKE/HEAT DETECTOR, MODEL SIGA-FHS
SD-DD	DUCT DETECTOR, MODEL SIGA-DD
T	MANUAL PULL STATION SIGA-278
MS	MULTI-CD STROBE, MODEL G1-FM
HS	HORN/STROBE, MODEL G1-HDVM
HS	HORN/STROBE, CEILING MOUNTED, MODEL G1-CDM
HD	HEAT DETECTOR, MODEL SIGA-HRS
S	SPEAKER, MODEL GENESIS GC-52
FP	FIRE PHONE JACK
TS	SPRINKLER WATERFLOW SWITCH
RV	GATE VALVE TAMPER SWITCH
RM	RELAY MODULE, MODEL EST SIGA CR
OM	OUTPUT MODULE, MODEL EST SIGA CC1
IR	END-OF-LINE RESISTOR, 47K OHMS
AM	ANGLE INPUT MODULE, MODEL EST SIGA CT1
DM	DUAL INPUT MODULE, MODEL EST SIGA CT2
BP510	BOOSTER POWER SUPPLY, MODEL EST BP510
FACP	FIRE ALARM CONTROL PANEL, MODEL EST G51
RA	FIRE ALARM REMOTE ANNUNCIATOR PANEL, MODEL G5A
FD	FIRE SMOKE DAMPER

FIRE ALARM SYSTEM NOTES

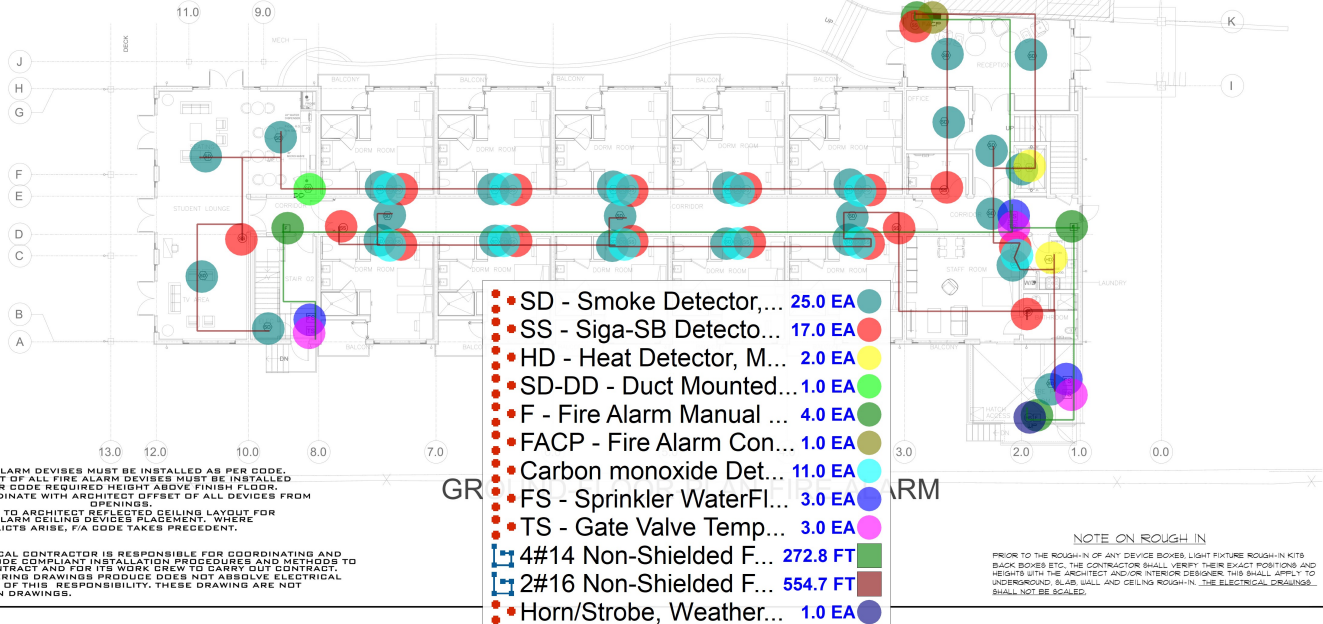
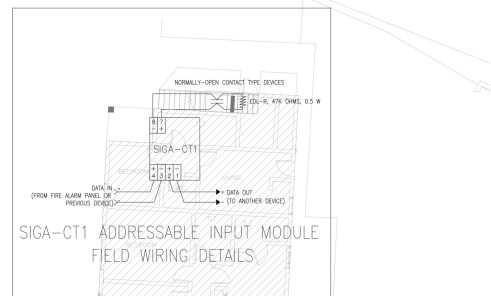
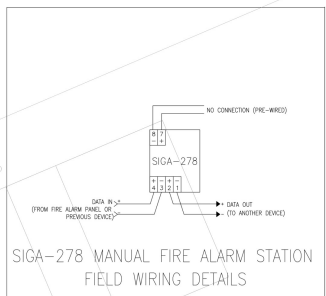
1. MANUAL PULL STATIONS TO BE MOUNTED 4FT AFF.
2. WALL MOUNTED HORN/STROBES TO BE MOUNTED 4FT AFF.
3. DUCT FITTED SMOKE DETECTORS REQUIRED ON ALL DUCTS OVER 3000 SQ FT.
4. ALL WIRE ALUMINUM CABLE TO BE INSTALLED IN CONDUIT OR CONDUIT-LIKE PER CANADIAN ELECTRICAL CODE.
5. SMOKE DETECTOR NOT TO BE MOUNTED WITHIN 1' OF AIR-SEAL.
6. CT MODULE REQUIRED AT EVERY SPRINKLER CONTROL VALVE AND WATER FLOW SWITCH.
7. SMOKE CASSELLA TO BE SET AT 7% CASSELLA.
8. WALL MOUNTED HORN/STROBES TO BE MOUNTED 4FT AFF.
9. FACP SHALL HAVE THE CAPABILITY TO COMMUNICATE WITH REMOTE MONITORING STATION.
10. SMOKE DETECTORS DISTANCE TO SUPPLY RETURN AIR UNIT - REFER TO 2.
11. SPEAKERS TO BE JAPPED AT 4' HWT.
12. REFER TO RFP FOR EXACT PLACEMENT OF DEVICES.

1. DUCT DETECTOR AND FINE PROBE DAMPER QUANTITY AND LOCATION TAKEN FROM MECHANICAL CONTRACTOR INSTALLATION DRAWINGS.
2. WATER FLOW AND TAMPER SWITCH QUANTITY AND LOCATION TAKEN FROM FIRE PROTECTION CONTRACTOR INSTALLATION DRAWINGS.

FIRE ALARM SYSTEM WIRING LEGEND

A = SLC	16/2 NON-SHIELED FPL
B = HORN/STROBE	14/4 NON-SHIELED FPL
C = SPEAKER	16/2 SHIELED FPL
D = FIRE PHONE	16/2 SHIELED FPL
E = 24 VDC RISER	16/4 NON-SHIELED FPL
F = STROBE	14/2 NON-SHIELED FPL
G = AUDIO RISER	16/2 SHIELED FPL

EX: 1-A = QTY. 1 CABLE TYPE A



FIRE ALARM DEVICES MUST BE INSTALLED AS PER CODE. HEIGHT OF ALL FIRE ALARM DEVICES MUST BE INSTALLED AS PER CODE REQUIRED HEIGHT ABOVE FINISH FLOOR. COORDINATE WITH ARCHITECT OFF SET OF ALL DEVICES FROM OPENINGS.

REFER TO ARCHITECT REFLECTED CEILING LAYOUT FOR FIRE ALARM CEILING DEVICES PLACEMENT. WHERE CONFLICTS ARISE, F.A. CODE TAKES PRECEDENT.

THE ELECTRICAL CONTRACTOR IS RESPONSIBLE FOR COORDINATING AND PLANNING CODE COMPLIANT INSTALLATION PROCEDURES TO EXECUTE CONTRACT AND FOR ITS WORK CREW TO CARRY OUT CONTRACT. THE ENGINEERING DRAWINGS PROVIDED DOES NOT ABSOLVE ELECTRICAL CONTRACTOR OF THIS RESPONSIBILITY. THESE DRAWINGS ARE NOT INSTALLATION DRAWINGS.

NOTE ON ROUGH IN

PRIOR TO THE ROUGH-IN OF ANY DEVICE BOXES, LIGHT FIXTURE ROUGH-IN KITS, BLACK BOXES ETC., THE CONTRACTOR SHALL VERIFY THEIR EXACT POSITION AND HEIGHTS WITH THE ARCHITECT AND/OR INTERIOR DESIGNER. THIS SHALL APPLY TO UNDERGROUND, SLAB, WALL AND CEILING ROUGH-IN. THE ELECTRICAL DRAWINGS SHALL NOT BE SCALED.

REVISION	BY	DATE

CONTRACTOR SHALL BE RESPONSIBLE FOR COORDINATING AND PLANNING CODE COMPLIANT INSTALLATION PROCEDURES TO EXECUTE CONTRACT AND FOR ITS WORK CREW TO CARRY OUT CONTRACT. THE ENGINEERING DRAWINGS PROVIDED DOES NOT ABSOLVE ELECTRICAL CONTRACTOR OF THIS RESPONSIBILITY. THESE DRAWINGS ARE NOT INSTALLATION DRAWINGS.

THE ELECTRICAL CONTRACTOR SHALL BE RESPONSIBLE FOR COORDINATING AND PLANNING CODE COMPLIANT INSTALLATION PROCEDURES TO EXECUTE CONTRACT AND FOR ITS WORK CREW TO CARRY OUT CONTRACT. THE ENGINEERING DRAWINGS PROVIDED DOES NOT ABSOLVE ELECTRICAL CONTRACTOR OF THIS RESPONSIBILITY. THESE DRAWINGS ARE NOT INSTALLATION DRAWINGS.

PROJECT INFORMATION

**KINGS BEACH LODGE
WEST BAY STREET
NASSAU, BAHAMAS**

EDS

ELECTRICAL DESIGN & SERVICES LTD.

100, Bay Street, Nassau, Bahamas

Phone: (242) 377-2200
Fax: (242) 377-2201
Email: info@eds.com

Electrical, Fire Protection, HVAC & Plumbing Designs
Designing for the 21st Century and Beyond!

DATE: 29/07/23
DESIGNED BY: RASII
DRAWN BY: RASII
REVIEWED BY: RASII
SCALE: 1/8"=1'-0"

SHEET #:
FA1-OF-2

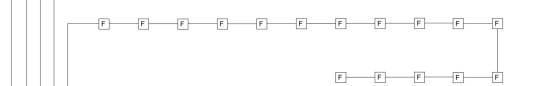
TYPICAL OF HORN STROBES CONNECTION AND COUNTS



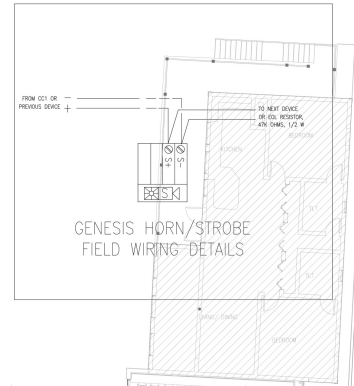
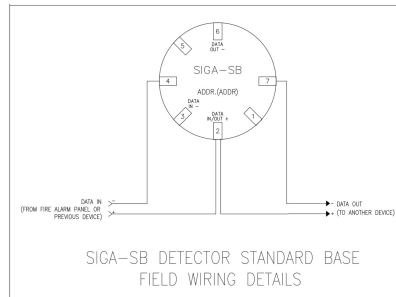
TYPICAL OF SMOKE DETECTORS CONNECTION AND COUNTS



TYPICAL OF PULL STATIONS CONNECTION AND COUNTS



FIRE-ALARM-ONE-LINE



F.A.C.P. PROVIDE TELEPHONE & 120V CONNECTION LOCATED IN RECEPTION

- SS - Siga-SB Detecto... 16.0 EA
- SD - Smoke Detector,... 22.0 EA
- SD-DD - Duct Mounte... 3.0 EA
- HD - Heat Detector, M... 2.0 EA
- FS - Sprinkler WaterFI... 2.0 EA
- TS - Gate Valve Temp... 2.0 EA
- F - Fire Alarm Manual ... 2.0 EA
- Carbon monoxide De... 11.0 EA
- 2#16 Non-Shielded ... 406.2 FT
- 4#14 Non-Shielded ... 163.3 FT



FIRST-FLOOR-PLAN-FIRE-ALARM

FIRE ALARM DEVICES MUST BE INSTALLED AS PER CODE. HEIGHT OF FIRE ALARM DEVICES MUST BE INSTALLED AS PER CODE REQUIRED HEIGHT ABOVE FINISH FLOOR. COORDINATE WITH ARCHITECT OFFSET OF ALL DEVICES FROM OPENINGS. REFER TO ARCHITECT REFLECTED CEILING LAYOUT FOR FIRE ALARM CEILING DEVICES PLACEMENT. WHERE CONFLICTS ARISE, FIA CODE TAKES PRECEDENT.

THE ELECTRICAL CONTRACTOR IS RESPONSIBLE FOR COORDINATING AND PLANNING CODE COMPLIANT INSTALLATION PROCEDURES AND METHODS TO EXECUTE CONTRACT AND FOR ITS WORK DREW TO CARRY OUT CONTRACT. THE ENGINEERING DRAWINGS PRODUCE DOES NOT ABSOLVE ELECTRICAL CONTRACTOR OF THIS RESPONSIBILITY. THESE DRAWING ARE NOT INSTALLATION DRAWINGS.

REVISION	BY	DATE

CONTRACTOR SHALL BE RESPONSIBLE FOR CONSTRUCTION AS DESIGNED IN THESE PLANS AND SUBJECT TO THE LOCAL CODES. THE CONTRACTOR SHALL BE RESPONSIBLE FOR OBTAINING ALL NECESSARY PERMITS AND COMPLIANCE WITH ALL CODES. IF ANY CHANGES ARE REQUIRED, PLEASE CONTACT US TO DESIGN REPRESENTATIVE FOR FURTHER APPROVAL OF THE REQUIRED CHANGES.

THIS DRAWING IS PROVIDED BY EDS IN AN "AS IS" BASIS AND WITHOUT WARRANTY OF ANY KIND, EXPRESS OR IMPLIED, INCLUDING BUT NOT LIMITED TO THE IMPLIED WARRANTIES OF MERCHANTABILITY AND FITNESS FOR A PARTICULAR PURPOSE. THE USER SHALL BE RESPONSIBLE FOR OBTAINING ALL NECESSARY PERMITS AND COMPLIANCE WITH ALL CODES. IF ANY CHANGES ARE REQUIRED, PLEASE CONTACT US TO DESIGN REPRESENTATIVE FOR FURTHER APPROVAL OF THE REQUIRED CHANGES.

THE ELECTRICAL CONTRACTOR SHALL BE RESPONSIBLE FOR OBTAINING ALL NECESSARY PERMITS AND COMPLIANCE WITH ALL CODES. IF ANY CHANGES ARE REQUIRED, PLEASE CONTACT US TO DESIGN REPRESENTATIVE FOR FURTHER APPROVAL OF THE REQUIRED CHANGES.

PROJECT INFORMATION
KINGS BEACH LODGE
WEST BAY STREET
NASSAU, BAHAMAS

EDS
ELECTRICAL DESIGN & SERVICES LTD.
 100 Bay St, Nassau, Bahamas
 Tel: (242) 322-1180
 Fax: (242) 322-1181
 Email: info@eds.com
 Website: www.eds.com
 Electrical, Fire Protection, HVAC & Plumbing Designs
 Operating For The 21st Century And Beyond

DATE: 29/07/23
 DESIGNED BY: RASB
 DRAWN BY: RASB
 REVIEWED BY: RASB
 SCALE: 1/8"=1'-0"

SHEET #:
FA2-OF-2

8001 ELECTRON, DESIGN & SERVICES LTD.