

E. 158TH ST APARTMENTS

409 EAST 158TH STREET, BRONX, NY

OWNER/DEVELOPER
WEST STREET PARTNERS LLC
 C/O GCM/TH DEVELOPMENT
 207 W 110th St
 NEW YORK, NY 10038

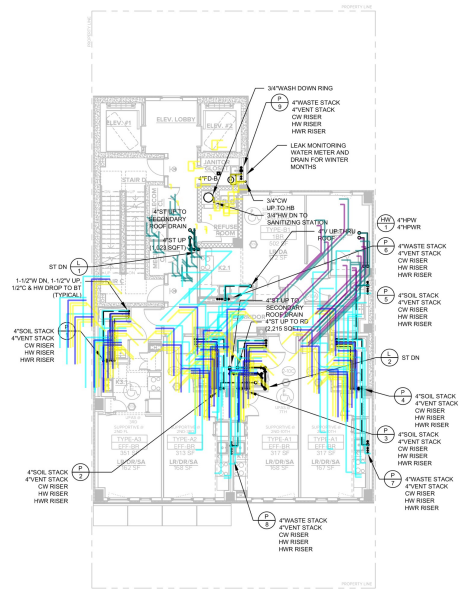
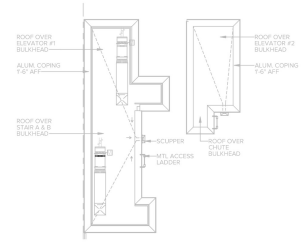
ARCHITECT
BROOKER ENGINEERING
 74 Lafayette Avenue
 Suite 501
 Suffern, NY 10906
 845.331.7898

MEP ENGINEER
SIDRIS KEFALAS ENGINEERS P.C.
 217-22 Northern Blvd
 Bayside, NY 11561
 781.224.9099

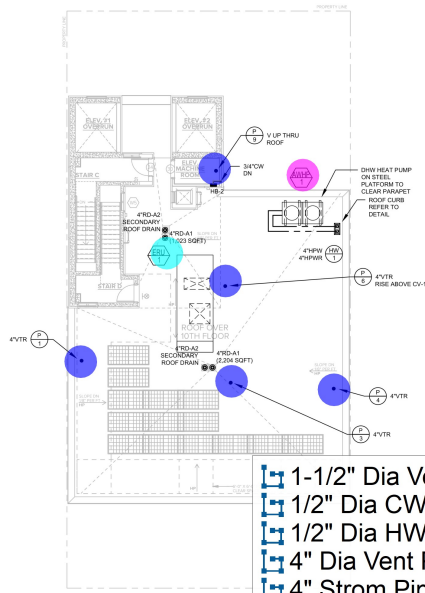
MECHANICAL ENGINEER
BROOKER ENGINEERING
 74 Lafayette Avenue
 Suite 501
 Suffern, NY 10906
 845.331.7898

ELECTRICAL ENGINEER
BRIGHTPOWER
 11 Hovover Square
 Suite 501
 New York, NY 10005
 646.760.5500

ENVIRONMENTAL ENGINEER
HVB
 One Penn Plaza
 Suite 708
 New York, NY 10119
 973.776.2148



SECOND THRU TENTH FLOOR PLAN - PLUMBING
 SCALE: 1/8" = 1'-0"



ROOF PLAN - PLUMBING
 SCALE: 1/8" = 1'-0"

- 1-1/2" Dia Vent Pipe
- 1/2" Dia CW Pipe
- 1/2" Dia HW Pipe
- 4" Dia Vent Pipe
- 4" Strom Pipe
- 4" Dia CW Pipe
- 4" Dia HPW Pipe
- 4" Vent Thru Roof
- AWHP 1
- ERU -1

792.0 FT	2ND THRU 10TH AND ROOF PLUMBING PLAN
864.4 FT	
419.4 FT	
172.4 FT	
94.1 FT	
85.2 FT	
175.3 FT	
158.1 FT	
5.0 EA	
1.0 EA	
1.0 EA	

DATE	DESCRIPTION
08/02/2019	ISSUE SET
08/13/2019	REVISION TO HOWRD
08/20/2019	ISSUE COMMENTS
09/03/2019	ISSUE COMMENTS
09/23/2019	ISSUE COMMENTS
10/21/2019	ISSUE COMMENTS
11/18/2019	ISSUE COMMENTS
12/18/2019	ISSUE COMMENTS
01/16/2020	ISSUE COMMENTS
01/23/2020	ISSUE COMMENTS
01/23/2020	ISSUE COMMENTS
01/23/2020	ISSUE COMMENTS

PREPARED BY: [Signature] CHECKED BY: [Signature] DATE: 10/14/20 PROJECT NO: 201907 DRAWING NO: STM SHEET NO: 04 OF 01 SCALE: 1/8" = 1'-0" PROJECT: E. 158TH ST APARTMENTS	SEAL & SIGNATURE: [Signature] TITLE: [Title] EXPIRES: [Date]
--	--

E. 158TH ST APARTMENTS

409 EAST 158TH STREET, BRONX, NY

OWNER:
AUFANG.
74 Lafayette Avenue
Suite 202, Suffern,
NY 10986
845.328.0044
aufang.com

DEVELOPER:
100TH STREET PARTNERS LLC
C/O KCM/TH DEVELOPMENT
20171 LEXINGTON STREET
NEW YORK, NY 10038

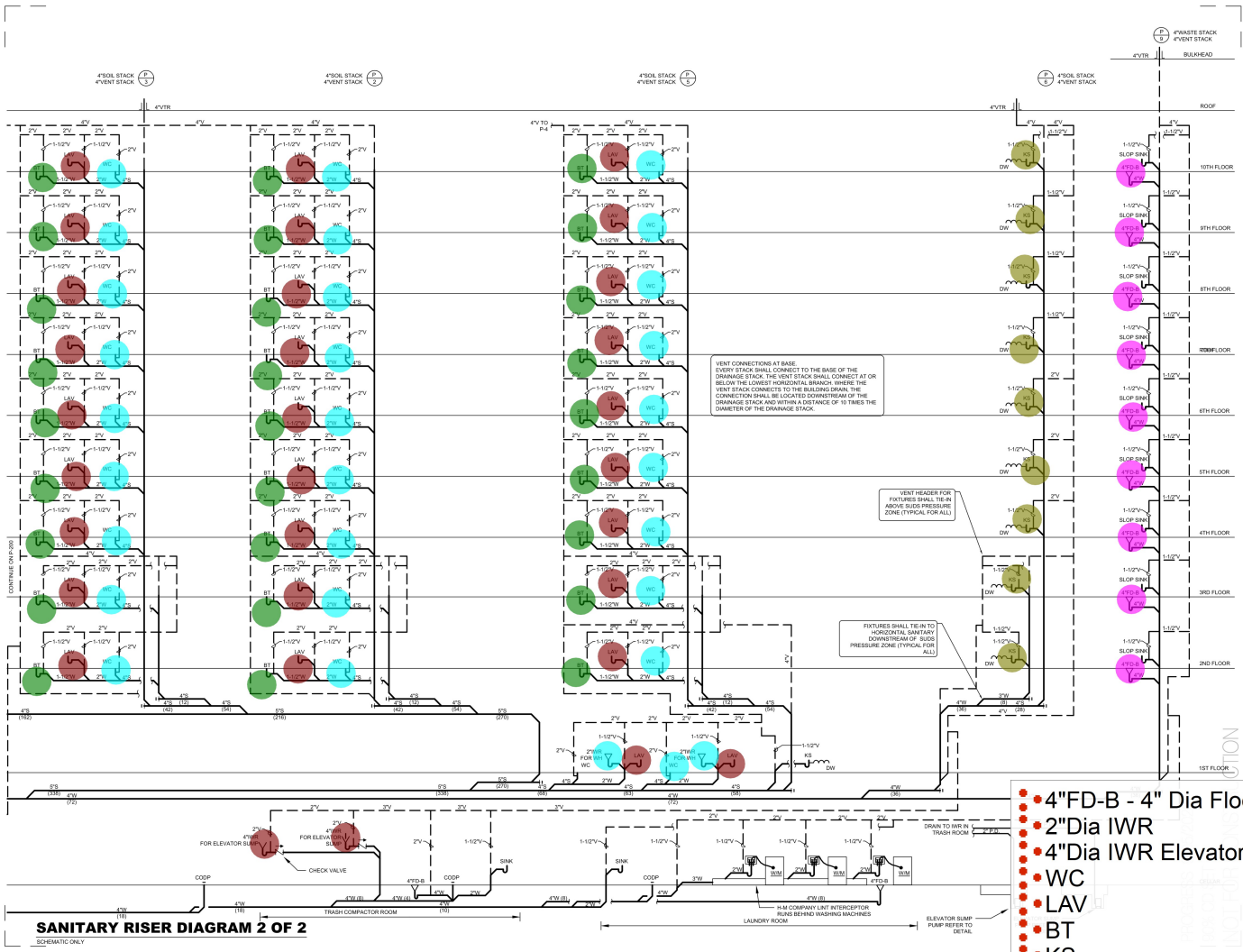
MECHANICAL ENGINEER:
BROOKER ENGINEERING
74 Lafayette Avenue
Suite 201
Suffern, NY 10986
845.328.1096

MECHANICAL ENGINEER:
SIDERS KEFALAS
ENGINEERS P.C.
217-22 Northern Blvd
Roseland, NY 11423
78.224.3059

MECHANICAL ENGINEER:
BROOKER ENGINEERING
74 Lafayette Avenue
Suite 201
Suffern, NY 10986
845.328.1096

MECHANICAL ENGINEER:
BRIGHTPOWER
11 Haver Square
2nd Floor
New York, NY 10005
646.765.6559

MECHANICAL ENGINEER:
HVB
One Penn Plaza
New York, NY 10119
973.746.2148



- 4"FD-B - 4" Dia Floor ... 9.0 EA
- 2" Dia IWR 2.0 EA
- 4" Dia IWR Elevator S... 2.0 EA
- WC 28.0 EA
- LAV 29.0 EA
- BT 27.0 EA
- KS 9.0 EA

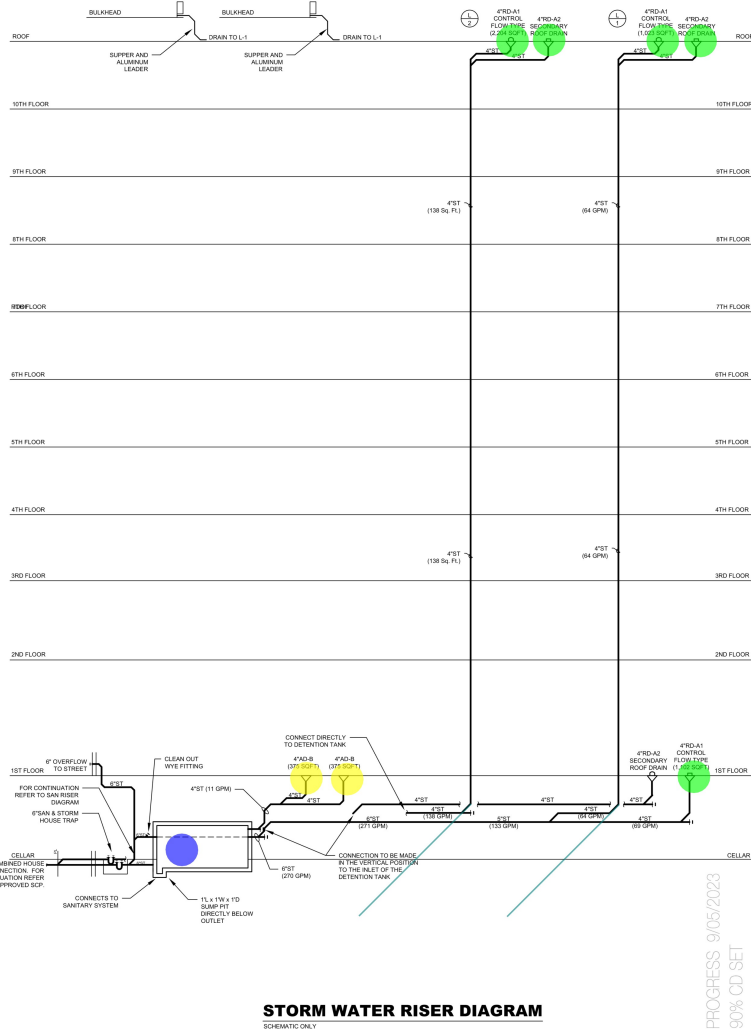
NO.	DATE	DESCRIPTION	BY	CHKD
01	08/01/2023	ISSUE FOR SET		
02	08/17/2023	REVISION TO HOWD		
03	08/30/2023	REV COMMENTS		
04	09/05/2023	RFPA SUBMITTAL		
05	09/20/2023	ISSUE FOR HOWD		
06	10/10/2023	COOPERATION CONCRETE SUBMITTAL		
07	10/10/2023	ISSUE FOR SET		
08	10/10/2023	REVISION TO COOP		
09	10/10/2023	ISSUE FOR SET		
10	10/10/2023	ISSUE FOR SET		
11	10/10/2023	ISSUE FOR SET		

SANITARY RISER DIAGRAM 2 OF 2
SCHEMATIC ONLY

TYPICAL KITCHEN/PUBLIC KITCHENETTE FIXTURE SCHEDULE				
DESCRIPTION	MANUFACTURER	MODEL #	COLOR	LOCATION
FRONT CONTROL ELECTRIC RANGE	WHIRLPOOL	WEC3050P	TBD	APARTMENT
DUCTED RANGE HOOD	BROAN	4000 SERIES	TBD	APARTMENT
SINGLE BOWL SINK	ELKAY	LRADQ25224	TBD	APARTMENT/PUBLIC KITCHENETTE
KITCHEN FAUCET	DELTA	894274	TBD	APARTMENT/PUBLIC KITCHENETTE
TOP FREEZER REFRIGERATOR	GE APPLIANCE	GTEB36S	TBD	APARTMENT/PUBLIC KITCHENETTE

TYPICAL BATHROOM/PUBLIC TOILET FIXTURE SCHEDULE				
DESCRIPTION	MANUFACTURER	MODEL #	COLOR	LOCATION
WALL MOUNTED SINK	NAMEIK'S	TECLA CANDID01	WHITE	APARTMENT
BATHROOM FAUCET	DELTA	3574 MP4DST	TBD	APARTMENT
HEAVY DUTY PLASTIC TOILET SEAT W/ EASY CLEAN	PROFLO	PPFSHEC2000	WHITE	APARTMENT/PUBLIC TOILET
COMPACTED ELONGATED BACK OUTLET TOILET	GERBER	20-022	WHITE	APARTMENT/PUBLIC TOILET
ENAMELED STEEL SOAKING TUB	PROFLO	FFB365/ PFB365	WHITE	APARTMENT
TILT MIRROR WITH STAINLESS STEEL FRAME	BOBERCK	B-263 2436	STAINLESS STEEL	PUBLIC TOILET
SURFACE MOUNTED SOAP DISPENSER	BOBERCK	B-412	STAINLESS STEEL	PUBLIC TOILET
SURFACE MOUNTED PAPER TOWEL DISPENSER AND WASTE RECEPTACLE	BOBERCK	B-3699	STAINLESS STEEL	PUBLIC TOILET
WALL MOUNTED SINK	AMERICAN STANDARD	0321026	WHITE	PUBLIC TOILET
END MOUNT TUB SEAT	FREEDOM SHOWERS	APRSTE 30290 (PPR476)	WHITE	APARTMENT
SINGLE ROLL TOILET TISSUE DISPENSER	BOBERCK	B-685	STAINLESS STEEL	APARTMENT
TOWEL BAR	BOBERCK	B-673	STAINLESS STEEL	APARTMENT
HANDHELD SHOWER W/ SLIDE BAR	MOEN	3669P	TBD	APARTMENT
SURFACE MOUNTED SOAP DISH	BOBERCK	B-680	STAINLESS STEEL	APARTMENT
SURFACE MOUNTED MEDICINE CABINET	BOBERCK	B-299	STAINLESS STEEL	APARTMENT
TUB AND SHOWER FAUCET TRIM	BOBERCK	RB36405 RB3557	WHITE	APARTMENT
SURFACE MOUNTED MULTI-ROLL TISSUE DISPENSER	BOBERCK	B-2888	STAINLESS STEEL	PUBLIC TOILET

1. MANY FIXTURE SUBSTITUTIONS SHALL BE SUBMITTED TO THE ARCHITECT FOR REVIEW AND APPROVAL.
 2. ALL FIXTURE FLOW AND FLUSH RATES ARE IN COMPLIANCE WITH SUSTAINABILITY DESIGN GUIDELINES - SECTION 2.8) WATER EFFICIENCY. SEE SPECIFICATIONS FOR FIXTURE FLOW AND FLUSH RATES.



STORM WATER RISER DIAGRAM
SCHEMATIC ONLY

- 4" Storm Pipe 224.0 FT
- 4" Dia Roof Drain - R... 3.0 EA
- 4" Dia Roof Drain - R... 2.0 EA
- 4"AD-B 2.0 EA
- 1'Lx1'Wx1'D Sump pi... 1.0 EA

E. 158TH ST APARTMENTS

409 EAST 158TH STREET, BRONX, NY

AUFANG.
 74 Lafayette Avenue
 Suite 501
 Suffern, NY 10986
 845.338.0044
 info@aufang.com

Developer:
WEST STREET PARTNERS LLC
 C/O ZACHRY DEVELOPMENT
 201711 YORK STREET
 NEW YORK, NY 10038

Structural Engineer:
BROOKER ENGINEERING
 74 Lafayette Avenue
 Suite 501
 Suffern, NY 10986
 845.338.1898

MEP Engineer:
SIDENS KEFALAS ENGINEERS P.C.
 217-22 Northern Blvd
 Bayside, NY 11004
 78.224.3099

Civil Engineer:
BROOKER ENGINEERING
 74 Lafayette Avenue
 Suite 501
 Suffern, NY 10986
 845.338.1898

Electrical Engineer:
BRIGHTPOWER
 11 Hopper Square,
 2nd Floor
 New York, NY 10005
 646.760.5500

Environmental Engineer:
HVB
 One Penn Plaza
 Suite 709
 New York, NY 10119
 973.776.2748

DATE	DESCRIPTION	BY	CHKD
08/02/2023	0% SET		
08/17/2023	15% SUBMITTAL TO CHORD		
08/30/2023	15% COMMENTS		
09/05/2023	30% SUBMITTAL		
09/20/2023	30% COMMENTS		
10/18/2023	100% CONSTRUCTION SUBMITTAL		
10/19/2023	100% SET		
10/19/2023	100% TO COR		
12/14/2023	100% TO COR		
01/12/2024	100% SET		
DATE	DESCRIPTION	BY	CHKD

STORM WATER & NATURAL GAS RISER DIAGRAM

DATE: 9/05/2023

PROJECT NO: 23-007

DRAWN BY: STM

CHECKED BY: CMS/FTK

SCALE: 1/8" = 1'-0"

DRAWING NO: P-210.00

PROJECT SHEET: 07 OF 11

PROGRESS: 9/05/2023
 100% CD SET
 NOT FOR CONSTRUCTION

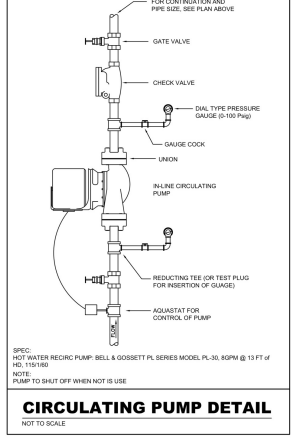
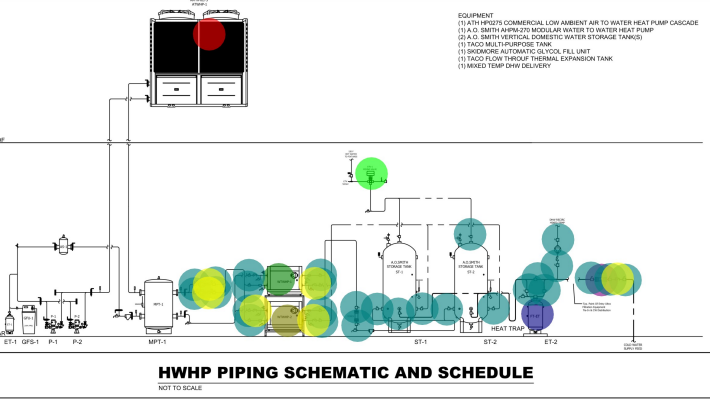
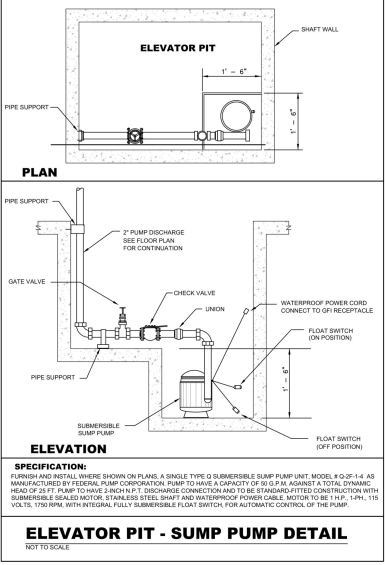
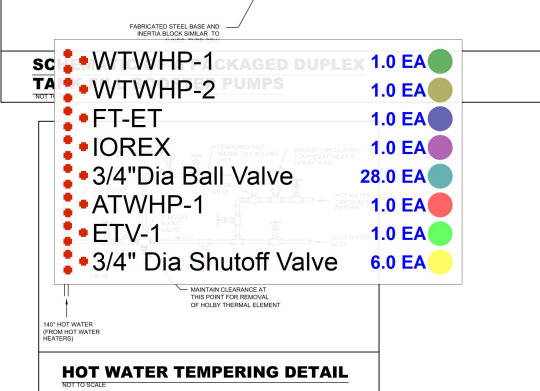
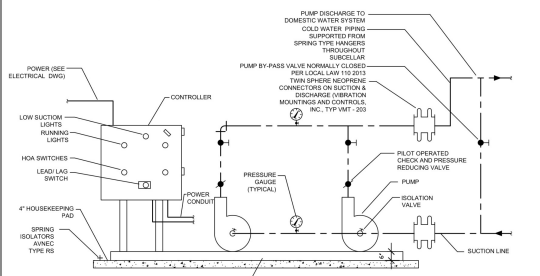
PRESSURE BOOSTING SYSTEM SPECIFICATION

1. PURCHASE AND INSTALL A FACTORY ASSEMBLED DUPLEX WATER PRESSURE SYSTEM EQUAL TO SICO DOMESTIC BOOSTERS (GIMBY EQUIPMENT CO., INC. - PLAINFIELD, N.J.)
2. THE UNIT SHALL INCLUDE TWO (2) 1/2" STAGE, DUPLEX TYPE, VERTICALLY MOUNTED GALVANIZED OR PUMPS AND HAVE A CAST IRON CASTING, STAINLESS STEEL, BRASS/BRONZE AND BRONZE. EACH PUMP SHALL HAVE A BRASS, TRANSDUCER MECHANICAL SHUT OFF SUBJECT TO SECTION PRESSURE AND REPLACEMENTS WITHOUT OBTAINING THE PUMPING CONNECTIONS.
3. THE SYSTEM SHALL INCLUDE A PLANT OPERATOR TYPE PRESSURE REGULATING AND CHECK VALVE FOR EACH PUMP.
4. THE SYSTEM SHALL INCLUDE A FILL CHARGED STORAGE TANK WITH AN AIR LINE BLENDER FOR AIR/REFRESH FOR PORTABLE WATER USE. THE TANK SHALL BE RATED FOR MAXIMUM WORKING PRESSURE OF 150 PSIG. DURING PERIODS OF LOW DEMAND THE UNIT SHALL PROVIDE COMPLETE PUMP SHUTDOWN AND UTILIZE THE STORAGE TANK TO MAINTAIN CONSTANT SYSTEM PRESSURE BETWEEN PUMP CYCLES.
5. THE SYSTEM SHALL BE FACTORY ASSEMBLED ON A STEEL BASE AND SHALL INCLUDE COPPER SUCTION AND DISCHARGE HEADERS, BRASS/BRONZE INTERCONNECTING PIPING, A PRESSURE GAUGE FOR EACH HEAD, A PRESSURE ISOLATION VALVE ON THE SUCTION AND DISCHARGE OF EACH PUMP AND A TRANSDUCER DRIVING PUMP VALVE. TANK CHECK VALVE WITH ONE-WAY FLOW CONTROL, COPPER TUBING WITH SHUT OFF COCKS FOR GASSES AND PRESSURE SWITCHES. THE ONLY FIELD CONNECTIONS REQUIRED WILL BE SYSTEM SUCTON, DISCHARGE AND POWER CONNECTION AT THE CONTROL PANEL.
6. THE SYSTEM SHALL INCLUDE A DUPLEX PRIMER/LOW CONTROL PANEL IN A NEMA 1 GENERAL PURPOSE ENCLOSURE, FACTORY MOUNTED AND WIRED IN THE UNIT. COMPRISING A DISCONNECT SWITCH FOR EACH MOTOR WITH THREE POSITION OPERATING HANDLES, ENERGY EFFICIENT TWO DRIVES FOR EACH MOTOR, HIGH SELECTION SWITCHES, PILOT LIGHTS, A LED-LED MANUAL TRANSFER, REQUIRED TRANSFORMERS, HOLDING CIRCUITS AND TIME DELAYS, CONTROL CONNECTION TERMINALS, STRIP TERMINALS AND PRESSURE CUT OFF SWITCH WITH PUMP RUNNING LIGHT AND REQUIRED CIRCUITRY WITH THE DELAY TO STOP PUMPS IF SUCTION PRESSURE DROPS BELOW A PREDETERMINED MINIMUM LEVEL AND ACTIVITIES ALREADY ALIGNED.
7. THE SERIALS OF FACTORY TRANSFORMERS SHALL BE MADE AVAILABLE AT THE JOB SITE TO CHECK INSTALLATION, START-UP AND INSTRUCT OPERATING PERSONNEL IN THE PROPER OPERATION AND MAINTENANCE.
8. THE MANUFACTURERS REPRESENTATIVE SHALL BE MADE AVAILABLE AT THE JOB SITE TO CHECK INSTALLATION, START-UP AND INSTRUCT OPERATING PERSONNEL IN THE PROPER OPERATION AND MAINTENANCE.

THE MANUFACTURERS REPRESENTATIVE FOR SICO SYSTEM IS:
 GIMBY EQUIPMENT CO., INC.
 150 EXPRESS STREET
 PLAINFIELD, NJ 07054
 PHONE: (908) 348-8888
 FAX: (908) 348-0709

PUMP No.	MODEL No.	GPM	FEET OF HEAD	HP	VOLTAGE	PHASE	RPM	STORAGE TANK		CONSTANT PRESSURE SYSTEM
								TANK CAPACITY	POSSIBLE PRESS.	
P-1	CRS-4	30	150 FT	7.5	208	3	3600			
P-2	CRS-4	30	150 FT	7.5	208	3	3600	100	100	VFD

TOTAL SYSTEM CAPACITY: 1000GPM @ 60PSI



ENERGY NOTE: FOR ALL DOMESTIC WATER PUMPS
 FOR CIRCULATING PUMPS SERVING HYDRONIC HEATING OR COOLING SYSTEMS WITH THREE-PHASE MOTORS, 1 HORSE-POWER OR LARGER, MOTORS SHALL MEET OR EXCEED EFFICIENCY STANDARDS FOR NEMA PREMIUM MOTORS. IF 3 HORSE-POWER OR LARGER, MUST ALSO BE SPECIFIED WITH VARIABLE FREQUENCY DRIVES.

E. 158TH ST APARTMENTS

409 EAST 158TH STREET, BRONX, NY

AUFGANG,
 74 Lafayette Avenue
 Suite 202
 Suffern, NY 10986
 845.326.0044
 845.326.0044
 845.326.0044

100% TH STREET PARTNERS LLC
 2017110000
 NEW YORK, NY 10038

SENIOR ENGINEER
 BROOKER ENGINEERING
 74 Lafayette Avenue
 Suite 202
 Suffern, NY 10986
 845.326.0044

MEP ENGINEER
 SIDERS KEFALAS ENGINEERS P.C.
 217-22 Northern Blvd
 Bayside, NY 11561
 78.224.9099

MEP ENGINEER
 BROOKER ENGINEERING
 74 Lafayette Avenue
 Suite 202
 Suffern, NY 10986
 845.326.0044

MEP ENGINEER
 BROOKER ENGINEERING
 74 Lafayette Avenue
 Suite 202
 Suffern, NY 10986
 845.326.0044

MEP ENGINEER
 BROOKER ENGINEERING
 74 Lafayette Avenue
 Suite 202
 Suffern, NY 10986
 845.326.0044

DATE	DESCRIPTION	BY	CHKD BY
08/02/2023	REV 01 SET		
08/11/2023	REVISION TO HARD		
08/03/2023	REV 00 MARKETS		
09/05/2023	SPRINT SUBMISSION		
08/23/2023	ISSUE FOR CONSTRUCTION		
04/18/2023	CONSTRUCTION DOCUMENT SUBMITTAL		
03/16/2023	10% SET		
02/16/2023	PERIOD TO COR		
12/14/2022	65% TO COR		
08/18/2022	10% SET		
04/01/2022	CONTRACT NEGOTIATION		

DATE	DESCRIPTION	BY	CHKD BY
08/02/2023	REV 01 SET		
08/11/2023	REVISION TO HARD		
08/03/2023	REV 00 MARKETS		
09/05/2023	SPRINT SUBMISSION		
08/23/2023	ISSUE FOR CONSTRUCTION		
04/18/2023	CONSTRUCTION DOCUMENT SUBMITTAL		
03/16/2023	10% SET		
02/16/2023	PERIOD TO COR		
12/14/2022	65% TO COR		
08/18/2022	10% SET		
04/01/2022	CONTRACT NEGOTIATION		

PLUMBING EQUIPMENT

ISSUE DATE: 10/10/23 PROJECT NO: 23-0027

DRAWN BY: STM CHECKED BY: CMS/FTK

SCALE: 1/8" = 1'-0" SHEET NO: 06 OF 11

DRAWING NO: P-300.00

PROJECT NUMBER: 100825-0002

PROGRESS 9/10/2023
 100% CD SET
 NOT FOR CONSTRUCTION